

For Research Use Only

Nucleoside phosphorylase Recombinant monoclonal antibody

Catalog Number: 86651-1-RR



Basic Information

Catalog Number: 86651-1-RR	GenBank Accession Number: BC106074	Purification Method: Protein A purification
Concentration: 1000 µg/ml	GeneID (NCBI): 4860	CloneNo.: 251603E11
Source: Rabbit	UNIPROT ID: P00491	Recommended Dilutions: WB: 1:5000-1:50000 IF/ICC: 1:200-1:800
Isotype: IgG	Full Name: nucleoside phosphorylase	
Immunogen Catalog Number: AG12507	Calculated MW: 289 aa, 32 kDa	
	Observed MW: 32 kDa	

Applications

Tested Applications: WB, IF/ICC, ELISA	Positive Controls:
Species Specificity: human, mouse, rat	WB : Jurkat cells, K-562 cells, U-937 cells, HL-60 cells, Raji cells, NIH/3T3 cells, rat spleen tissue
	IF/ICC : NIH/3T3 cells,

Background Information

Purine nucleoside phosphorylases (PNP) is a ubiquitous enzyme of purine metabolism that functions in the salvage pathway, including even those of protozoan parasites, thus enabling the cells to utilize purine bases recovered from metabolized purine ribo- and deoxyribonucleosides to synthesize purine nucleotides (PMID: 11337031, 23332162). PNP deficiency in humans leads to an impairment of T-cell function, usually with no apparent effects on B-cell function. hPNP is widely distributed in various tissues and cells of the human body, with the highest activity in kidney, peripheral lymphocytes and granulocytes (PMID: 38701712).

Storage

Storage:
Store at -20°C. Stable for one year after shipment.
Storage Buffer:
PBS with 0.02% sodium azide and 50% glycerol, pH7.3
Aliquoting is unnecessary for -20°C storage

For technical support and original validation data for this product please contact:

T: 4006900926

E: Proteintech-CN@ptglab.com

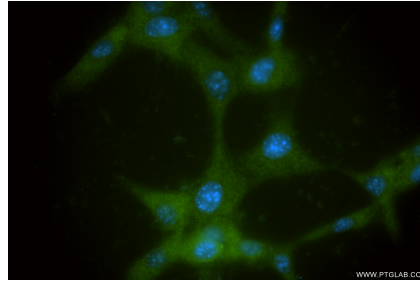
W: ptgcn.com

This product is exclusively available under Proteintech Group brand and is not available to purchase from any other manufacturer.

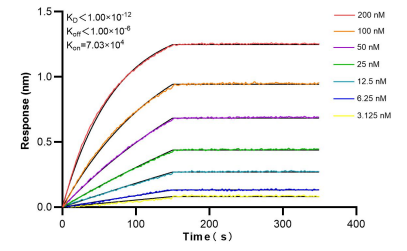
Selected Validation Data



Various lysates were subjected to SDS PAGE followed by western blot with 86651-1-RR (Nucleoside phosphorylase antibody) at dilution of 1:10000 incubated at room temperature for 1.5 hours.



Immunofluorescent analysis of (-20°C Ethanol) fixed NIH/3T3 cells using NP antibody (86651-1-RR, Clone: 251603E11) at dilution of 1:400 and CoraLite® 488-Conjugated Goat Anti-Rabbit IgG(H+L) (SA00013-2).



Biolayer interferometry (BLI) kinetic assays of 86651-1-RR against Human Nucleoside phosphorylase were performed. The affinity constant is below 1 pM.