

For Research Use Only

CD5L Recombinant monoclonal antibody

Catalog Number:86638-1-RR



Basic Information

Catalog Number: 86638-1-RR	GenBank Accession Number: NM_005894.2	Purification Method: Protein A purification
Source: Rabbit	GeneID (NCBI): 922	CloneNo.: 250651G1
Isotype: IgG	UNIPROT ID: O43866	Recommended Dilutions: WB: 1:500-1:2000 IF/ICC: 1:250-1:1000
Immunogen Catalog Number: EG3129	Full Name: CD5 molecule-like	
	Calculated MW: 38 kDa	
	Observed MW: 50 kDa	

Applications

Tested Applications: WB, IF/ICC, ELISA	Positive Controls:
Species Specificity: human	WB : human plasma, IF/ICC : Transfected CHO-K1,

Background Information

CD5 molecule-like (CD5L), also known as apoptosis inhibitor expressed by macrophages (AIM), SP-alpha, apoptosis inhibitor 6 (API6), is a member of the scavenger receptor cysteine-rich (SRCR) family of proteins (PMID: 9045627; 9892623). CD5L is a soluble protein mainly secreted mostly by macrophages in lymphoid and inflamed tissues (PMID: 15009805). It contains three SRCR domains, each approximately 100 amino acids in length with sialic acid content at a potential region of O-linked glycosylation between SRCR domains 1 and 2. CD5L is involved in different processes such as metabolism, infection and autophagy (PMID: 33920819).

Storage

Storage:
Store at -20°C. Stable for one year after shipment.
Storage Buffer:
PBS with 0.02% sodium azide and 50% glycerol, pH7.3
Aliquoting is unnecessary for -20°C storage

For technical support and original validation data for this product please contact:

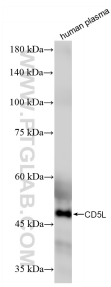
T: 4006900926

E: Proteintech-CN@ptglab.com

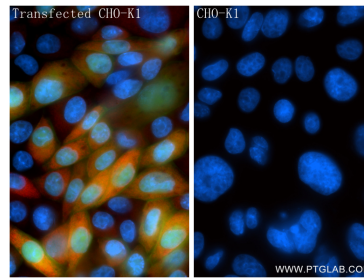
W: ptgcn.com

This product is exclusively available under Proteintech Group brand and is not available to purchase from any other manufacturer.

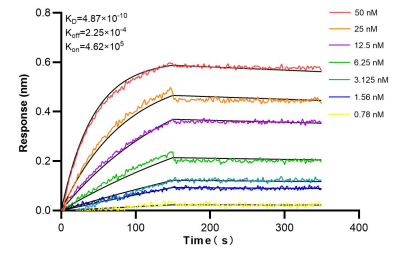
Selected Validation Data



human plasma were subjected to SDS PAGE followed by western blot with 86638-1-RR (CD5L antibody) at dilution of 1:1000 incubated at room temperature for 1.5 hours.



Immunofluorescent analysis of (4% PFA) fixed transfected CHO-K1 using CD5L antibody (86638-1-RR, Clone: 250651G1) at dilution of 1:500 and CoraLite®594-Conjugated Goat Anti-Rabbit IgG(H+L) (SA00013-4).



Bi-layer interferometry (BLI) kinetic assays of 86638-1-RR against Human CD5L were performed. The affinity constant is 0.487 nM.