

For Research Use Only

# CD5L Recombinant monoclonal antibody, PBS Only

Catalog Number:86638-1-PBS



## Basic Information

<b>Catalog Number:</b> 86638-1-PBS	<b>GenBank Accession Number:</b> NM_005894.2	<b>Purification Method:</b> Protein A purification
<b>Source:</b> Rabbit	<b>GeneID (NCBI):</b> 922	<b>CloneNo.:</b> 250651G1
<b>Isotype:</b> IgG	<b>UNIPROT ID:</b> O43866	
<b>Immunogen Catalog Number:</b> EG3129	<b>Full Name:</b> CD5 molecule-like	
	<b>Calculated MW:</b> 38 kDa	
	<b>Observed MW:</b> 50 kDa	

## Applications

**Tested Applications:**  
WB, IF/ICC, Indirect ELISA

**Species Specificity:**  
human

## Background Information

CD5 molecule-like (CD5L), also known as apoptosis inhibitor expressed by macrophages (AIM), SP-alpha, apoptosis inhibitor 6 (API6), is a member of the scavenger receptor cysteine-rich (SRCR) family of proteins (PMID: 9045627; 9892623). CD5L is a soluble protein mainly secreted mostly by macrophages in lymphoid and inflamed tissues (PMID: 15009805). It contains three SRCR domains, each approximately 100 amino acids in length with sialic acid content at a potential region of O-linked glycosylation between SRCR domains 1 and 2. CD5L is involved in different processes such as metabolism, infection and autophagy (PMID: 33920819).

## Storage

**Storage:**  
Store at -80°C.  
**The product is shipped with ice packs. Upon receipt, store it immediately at -80°C**

**Storage Buffer:**  
PBS only, pH7.3

For technical support and original validation data for this product please contact:

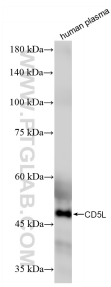
T: 4006900926

E: [Proteintech-CN@ptglab.com](mailto:Proteintech-CN@ptglab.com)

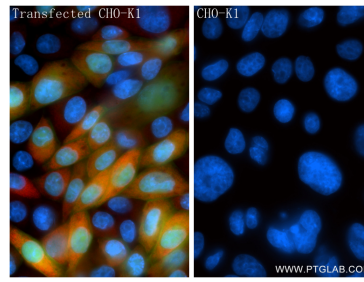
W: [ptgcn.com](http://ptgcn.com)

**This product is exclusively available under Proteintech Group brand and is not available to purchase from any other manufacturer.**

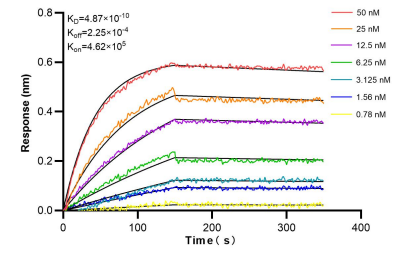
## Selected Validation Data



human plasma were subjected to SDS PAGE followed by western blot with 86638-1-RR (CD5L antibody) at dilution of 1:1000 incubated at room temperature for 1.5 hours. This data was developed using the same antibody clone with 86638-1-PBS in a different storage buffer formulation.



Immunofluorescent analysis of (4% PFA) fixed transfected CHO-K1 using CD5L antibody (86638-1-RR, Clone: 250651G1) at dilution of 1:500 and CoraLite®594-Conjugated Goat Anti-Rabbit IgG(H+L) (SA00013-4). This data was developed using the same antibody clone with 86638-1-PBS in a different storage buffer formulation.



Bi-layer interferometry (BLI) kinetic assays of 86638-1-RR against Human CD5L were performed. The affinity constant is 0.487 nM.