

For Research Use Only

SLC25A24 Recombinant monoclonal antibody, PBS Only (Capture)

Catalog Number:86635-2-PBS



Basic Information

Catalog Number: 86635-2-PBS	GenBank Accession Number: BC068561	Purification Method: Protein A purification
Source: Rabbit	GeneID (NCBI): 29957	CloneNo.: 251563E4
Isotype: IgG	UNIPROT ID: Q6NUK1	
Immunogen Catalog Number: AG6334	Full Name: solute carrier family 25 (mitochondrial carrier; phosphate carrier), member 24	
	Calculated MW: 53 kDa	

Applications

Tested Applications:
Sandwich ELISA, Indirect ELISA

Species Specificity:
human

Background Information

Storage

Storage:
Store at -80°C.
The product is shipped with ice packs. Upon receipt, store it immediately at -80°C

Storage Buffer:
PBS only, pH7.3

For technical support and original validation data for this product please contact:

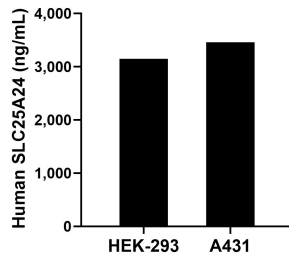
T: 4006900926

E: Proteintech-CN@ptglab.com

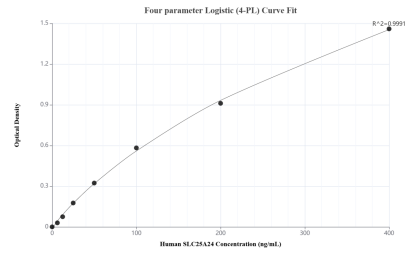
W: ptgcn.com

This product is exclusively available under Proteintech Group brand and is not available to purchase from any other manufacturer.

Selected Validation Data



The mean SLC25A24 concentration was determined to be 3,148.64 ng/mL in HEK-293 cell extract based on a 1.20 mg/mL extract load and 3,459.34 ng/mL in A431 cell extract based on a 1.20 mg/mL extract load.



Sandwich ELISA standard curve of MP02724-1, Human SLC25A24 Recombinant Matched Antibody Pair - PBS only. 86635-2-PBS was coated to a plate as the capture antibody and incubated with serial dilutions of standard Ag6334. 86635-1-PBS was HRP conjugated as the detection antibody. Range: 6.25-400 ng/mL.