

For Research Use Only

# CLEC5A Recombinant monoclonal antibody, PBS Only

Catalog Number:86633-2-PBS



## Basic Information

Catalog Number:

86633-2-PBS

Source:

Rabbit

Isotype:

IgG

GenBank Accession Number:

BC112099

GeneID (NCBI):

23601

UNIPROT ID:

Q9NY25

Full Name:

C-type lectin domain family 5, member A

Calculated MW:

188 aa, 22 kDa

Observed MW:

22 kDa

Purification Method:

Protein A purification

CloneNo.:

251734A11

## Applications

Tested Applications:

WB, Indirect ELISA

Species Specificity:

human

## Background Information

C-type lectin domain family 5 member A (CLEC5A, also known as CLECSF5 and MDL1) is a spleen tyrosine kinase (Syk)-coupled receptor abundantly expressed by monocytes, macrophages and neutrophils (PMID: 10449773). It has a pivotal function in activating multiple aspects of innate immunity against bacterial invasion (PMID: 28824166). Both in vitro and in vivo evidence supported that CLEC5A was involved in glioblastoma pathogenesis via regulation of PI3K/Akt pathway (PMID: 30834619).

## Storage

Storage:

Store at -80°C.

The product is shipped with ice packs. Upon receipt, store it immediately at -80°C

Storage Buffer:

PBS only, pH7.3

For technical support and original validation data for this product please contact:

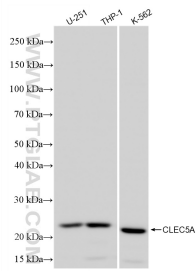
T: 4006900926

E: [Proteintech-CN@ptglab.com](mailto:Proteintech-CN@ptglab.com)

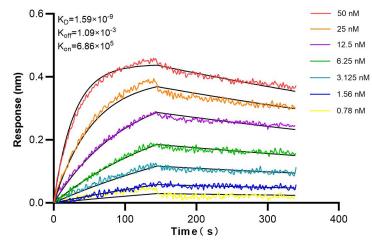
W: [ptgcn.com](http://ptgcn.com)

This product is exclusively available under Proteintech Group brand and is not available to purchase from any other manufacturer.

## Selected Validation Data



Various lysates were subjected to SDS PAGE followed by western blot with 86633-2-RR (CLEC5A antibody) at dilution of 1:3000 incubated at room temperature for 1.5 hours. This data was developed using the same antibody clone with 86633-2-PBS in a different storage buffer formulation.



Biolayer interferometry (BLI) kinetic assays of 86633-2-RR against Human CLEC5A were performed. The affinity constant is 1.59 nM.