

For Research Use Only

# SIGLEC14 Recombinant monoclonal antibody

Catalog Number:86628-3-RR



## Basic Information

<b>Catalog Number:</b> 86628-3-RR	<b>GenBank Accession Number:</b> NM_001098612.1	<b>Purification Method:</b> Protein A purification
<b>Source:</b> Rabbit	<b>GeneID (NCBI):</b> 100049587	<b>CloneNo.:</b> 250756E4
<b>Isotype:</b> IgG	<b>UNIPROT ID:</b> Q08ET2	<b>Recommended Dilutions:</b> WB: 1:1000-1:4000 IF/ICC: 1:50-1:500
<b>Immunogen Catalog Number:</b> EG4178	<b>Full Name:</b> sialic acid binding Ig-like lectin 14	
	<b>Calculated MW:</b> 44 kDa	
	<b>Observed MW:</b> 44 kDa	

## Applications

<b>Tested Applications:</b> WB, IF/ICC, ELISA	<b>Positive Controls:</b> WB : HL-60 cells, THP-1 cells, U-937 cells IF/ICC : U-937 cells,
<b>Species Specificity:</b> human	

## Background Information

Siglecs are involved in regulating cell proliferation, differentiation, apoptosis, and implementing cell-cell interactions (PMID: 19076345). They play important roles in regulating immune responses, in hostpathogen interactions, and in tumorigenesis (PMID: 22524423; 25234143). Sialic acid-binding Ig-like lectin 14 (SIGLEC14) is expressed by granulocytes and monocytes, which has an activating role in regulating macrophage immune responses (PMID: 24799499; 37024598).

## Storage

**Storage:**  
Store at -20°C. Stable for one year after shipment.  
**Storage Buffer:**  
PBS with 0.02% sodium azide and 50% glycerol, pH7.3  
Aliquoting is unnecessary for -20°C storage

For technical support and original validation data for this product please contact:

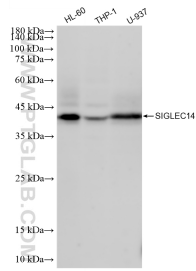
T: 4006900926

E: Proteintech-CN@ptglab.com

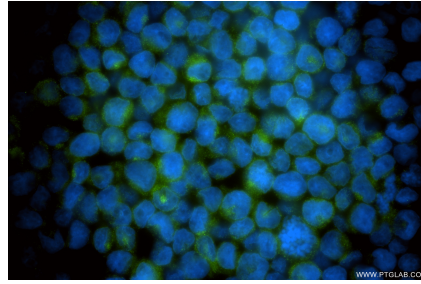
W: ptgcn.com

This product is exclusively available under Proteintech Group brand and is not available to purchase from any other manufacturer.

## Selected Validation Data



Various lysates were subjected to SDS PAGE followed by western blot with 86628-3-RR (Siglec-14 antibody) at dilution of 1:2000 incubated at room temperature for 1.5 hours.



Immunofluorescent analysis of (4% PFA) fixed U-937 cells using SIGLEC14 antibody (86628-3-RR, Clone: 250756E4 ) at dilution of 1:200 and CoraLite® 488-Conjugated Goat Anti-Rabbit IgG(H+L) (SA00013-2).