

For Research Use Only

# ELAVL2 Recombinant monoclonal antibody, PBS Only

Catalog Number:86623-3-PBS



## Basic Information

|  |   |   |
|--|---|---|
| <b>Catalog Number:</b><br>86623-3-PBS      | <b>GenBank Accession Number:</b><br>BC030692  | <b>Purification Method:</b><br>Protein A purification |
| <b>Concentration:</b><br>1000 µg/ml        | <b>GeneID (NCBI):</b><br>1993   | <b>CloneNo.:</b><br>251573E1                          |
| <b>Source:</b><br>Rabbit                   | <b>UNIPROT ID:</b><br>Q12926  |   |
| <b>Isotype:</b><br>IgG                     | <b>Full Name:</b><br>ELAV (embryonic lethal, abnormal vision, Drosophila)-like 2 (Hu antigen B) |   |
| <b>Immunogen Catalog Number:</b><br>AG5105 | <b>Calculated MW:</b><br>39 kDa   |   |
|  | <b>Observed MW:</b><br>39 kDa   |   |

## Applications

**Tested Applications:**  
WB, Indirect ELISA

**Species Specificity:**  
human, mouse, rat

## Background Information

The ELAV (embryonic lethal abnormal visual system) gene of *D. Melanogaste* is the the first identified member of a family of neuronal RNA binding proteins that is conserved in metazoans. The proteins in this family contain three RNA Recognition Motifs (RRM), with a hinge region separating the second and third RRM and an optional non-conserved N-terminal region. The hinge includes signals essential for nuclear export and subcellular localization [PMID:9874760]. Elav is expressed specifically in the neurons and is required for the correct development and maintenance of the nervous system. ELAVL2 can binds RNA, and recognize a GAAA motif. In addition, it can bind to its own 3'-UTR, the FOS 3'-UTR and the ID 3'-UTR.

## Storage

**Storage:**  
Store at -80°C.  
**The product is shipped with ice packs. Upon receipt, store it immediately at -80°C**

**Storage Buffer:**  
PBS only, pH7.3

For technical support and original validation data for this product please contact:

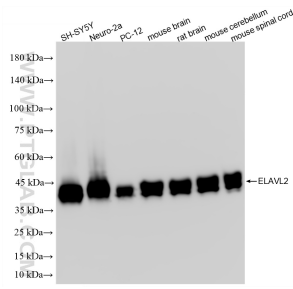
T: 4006900926

E: Proteintech-CN@ptglab.com

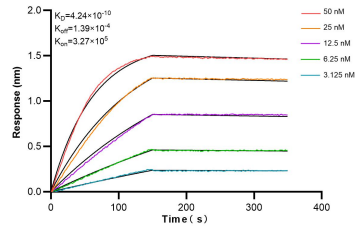
W: ptgcn.com

**This product is exclusively available under Proteintech Group brand and is not available to purchase from any other manufacturer.**

## Selected Validation Data



Various lysates were subjected to SDS PAGE followed by western blot with 86623-3-RR (ELAVL2 antibody) at dilution of 1:10000 incubated at room temperature for 1.5 hours. This data was developed using the same antibody clone with 86623-3-PBS in a different storage buffer formulation.



Biolayer interferometry (BLI) kinetic assays of 86623-3-RR against Human ELAVL2 were performed. The affinity constant is 0.424 nM.