

For Research Use Only

# ELAVL2 Recombinant antibody, PBS Only (Detector)

Catalog Number: 86623-2-PBS



## Basic Information

Catalog Number:

86623-2-PBS

Concentration:

1 mg/ml

Source:

Rabbit

Isotype:

IgG

Immunogen Catalog Number:

AG5105

GenBank Accession Number:

BC030692

GeneID (NCBI):

1993

UNIPROT ID:

Q12926

Full Name:

ELAV (embryonic lethal, abnormal vision, Drosophila)-like 2 (Hu antigen B)

Calculated MW:

39 kDa

Purification Method:

Protein A purification

CloneNo.:

251573G9

## Applications

Tested Applications:

Cytometric bead array, Indirect ELISA, Sample test

Species Specificity:

human

## Background Information

### Storage

Storage:

Store at -80°C.

The product is shipped with ice packs. Upon receipt, store it immediately at -80°C

Storage Buffer:

PBS only, pH7.3

For technical support and original validation data for this product please contact:

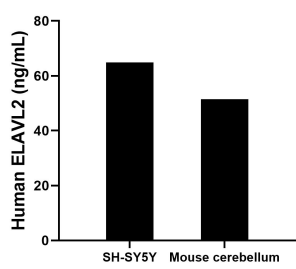
T: 4006900926

E: [Proteintech-CN@ptglab.com](mailto:Proteintech-CN@ptglab.com)

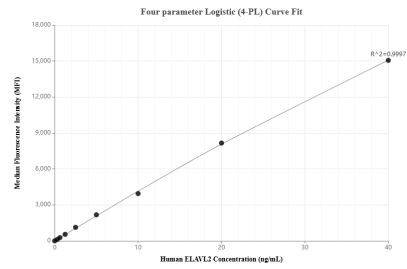
W: [ptgcn.com](http://ptgcn.com)

This product is exclusively available under Proteintech Group brand and is not available to purchase from any other manufacturer.

## Selected Validation Data



The mean ELAVL2 concentration was determined to be 64.9 ng/mL in SH-SY5Y cell extract based on a 1.0 mg/mL extract load, 51.5 ng/mL in mouse cerebellum tissue extract based on a 2.9 mg/mL extract load.



Cytometric bead array standard curve of MP02564-1, ELAVL2 Recombinant Matched Antibody Pair, PBS Only. Capture antibody: 86623-1-PBS. Detection antibody: 86623-2-PBS. Standard: Ag5105. Range: 0.312-40 ng/mL.