

For Research Use Only

# NUP153 Recombinant monoclonal antibody, PBS Only (Capture)

Catalog Number: 86622-1-PBS



## Basic Information

Catalog Number: 86622-1-PBS	GenBank Accession Number: BC052965	Purification Method: Protein A purification
Concentration: 1000 µg/ml	GeneID (NCBI): 9972	CloneNo.: 251519G11
Source: Rabbit	UNIPROT ID: P49790	
Isotype: IgG	Full Name: nucleoporin 153kDa	
Immunogen Catalog Number: AG5519	Calculated MW: 154 kDa	
	Observed MW: 160-170 kDa	

## Applications

**Tested Applications:**  
WB, IF/ICC, Sandwich ELISA, Indirect ELISA

**Species Specificity:**  
human, mouse

## Background Information

NUP153 is an FG-repeat containing NUP, contains a high-affinity site for importin- $\beta$ , localizes on the nucleoplasmic face of the nuclear pore and is required for assembly of the nuclear basket and import of a subset of nuclear proteins [PMID:18845677]. NUP153 also facilitates nuclear export of mRNA and ribonucleoprotein particles and may have additional functions within the nucleus [PMID:16195343]. The 53BP1-NUP153/importin- $\beta$  pathway as an important aspect of the DDR network add to an emerging evidence of subcellular trafficking as an integral part of genome surveillance [PMID:22075984].

## Storage

**Storage:**  
Store at -80°C.  
**The product is shipped with ice packs. Upon receipt, store it immediately at -80°C**

**Storage Buffer:**  
PBS only, pH7.3

For technical support and original validation data for this product please contact:

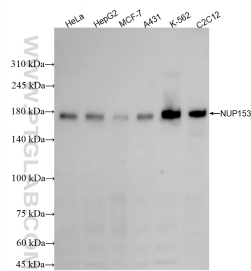
T: 4006900926

E: [Proteintech-CN@ptglab.com](mailto:Proteintech-CN@ptglab.com)

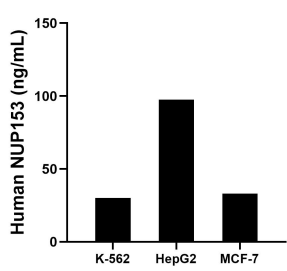
W: [ptgcn.com](http://ptgcn.com)

**This product is exclusively available under Proteintech Group brand and is not available to purchase from any other manufacturer.**

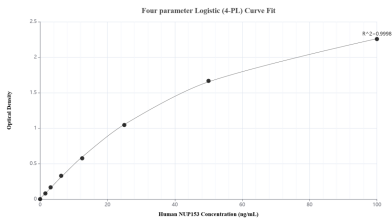
Selected Validation Data



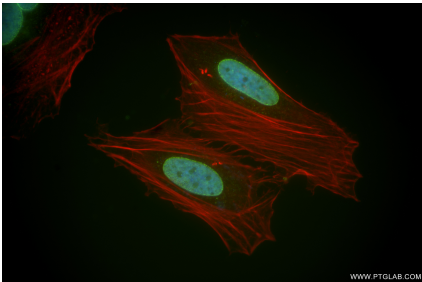
Various lysates were subjected to SDS PAGE followed by western blot with 86622-1-RR (NUP153 antibody) at dilution of 1:5000 incubated at room temperature for 1.5 hours. This data was developed using the same antibody clone with 86622-1-PBS in a different storage buffer formulation.



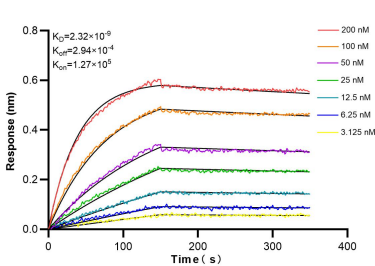
The mean NUP153 concentration was determined to be 30.07 ng/mL in K-562 cell extract based on a 1.20 mg/mL extract load, 97.51 ng/mL in HepG2 cell extract based on a 1.20 mg/mL extract load and 33.07 ng/mL in MCF-7 cell extract based on a 1.20 mg/mL extract load.



Sandwich ELISA standard curve of MP02679-1, Human NUP153 Recombinant Matched Antibody Pair - PBS only. 86622-1-PBS was coated to a plate as the capture antibody and incubated with serial dilutions of standard Ag5519. 86622-2-PBS was HRP conjugated as the detection antibody. Range: 1.56-100 ng/mL.



Immunofluorescent analysis of (4% PFA) fixed HeLa cells using NUP153 antibody (86622-1-RR, Clone: 251519G11) at dilution of 1:500 and CoraLite®488-Conjugated Goat Anti-Rabbit IgG(H+L) (SA00013-2), CL594-Phalloidin (red). This data was developed using the same antibody clone with 86622-1-PBS in a different storage buffer formulation.



Biolayer interferometry (BLI) kinetic assays of 86622-1-RR against Human NUP153 were performed. The affinity constant is 2.32 nM.