

For Research Use Only

CD13 Recombinant monoclonal antibody, PBS Only (Capture)

Catalog Number: 86620-4-PBS



Basic Information

Catalog Number:

86620-4-PBS

Source:

Rabbit

Isotype:

IgG

Immunogen Catalog Number:

EG3748

GenBank Accession Number:

BC058928

GeneID (NCBI):

290

ENSEMBL Gene ID:

ENSG00000166825

UNIPROT ID:

P15144

Full Name:

alanyl (membrane) aminopeptidase

Calculated MW:

110 kDa

Purification Method:

Protein A purification

CloneNo.:

251501D5

Applications

Tested Applications:

WB, IF/ICC, Sandwich ELISA, Indirect ELISA

Species Specificity:

human

Background Information

Storage

Storage:

Store at -80°C.

The product is shipped with ice packs. Upon receipt, store it immediately at -80°C

Storage Buffer:

PBS only, pH7.3

For technical support and original validation data for this product please contact:

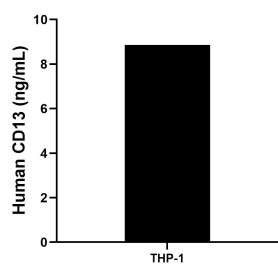
T: 4006900926

E: Proteintech-CN@ptglab.com

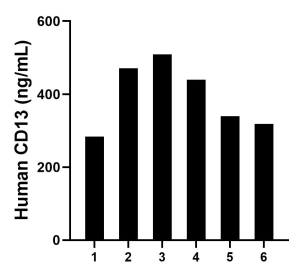
W: ptgcn.com

This product is exclusively available under Proteintech Group brand and is not available to purchase from any other manufacturer.

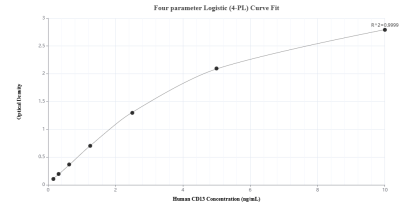
Selected Validation Data



The mean CD13 concentration was determined to be 8.86 ng/mL in THP-1 cell extract based on a 1.2 mg/mL extract load.



Plasma of six individual healthy human donors was measured. The human CD13 concentration of detected samples was determined to be 393.55 ng/mL with a range of 283.65 - 508.88 ng/mL.



Sandwich ELISA standard curve of MP02566-2, Human CD13 Recombinant Matched Antibody Pair - PBS only. 86620-4-PBS was coated to a plate as the capture antibody and incubated with serial dilutions of standard Eg3748. 86620-6-PBS was HRP conjugated as the detection antibody. Range: 0.156-10 ng/mL