

LRPPRC Recombinant monoclonal antibody

Catalog Number: 86616-2-RR

Basic Information

Catalog Number: 86616-2-RR	GenBank Accession Number: BC050311	Purification Method: Protein A purification
Source: Rabbit	GeneID (NCBI): 10128	CloneNo.: 251577F1
Isotype: IgG	UNIPROT ID: P42704	Recommended Dilutions: WB: 1:5000-1:50000
Immunogen Catalog Number: AG15452	Full Name: leucine-rich PPR-motif containing	
	Calculated MW: 1394 aa, 158 kDa	
	Observed MW: 130 kDa	

Applications

Tested Applications: WB, ELISA	Positive Controls: WB : HeLa cells, HepG2 cells, HEK-293T cells, mouse heart tissue, mouse kidney tissue, mouse liver tissue, rat heart tissue
Species Specificity: human, mouse, rat	

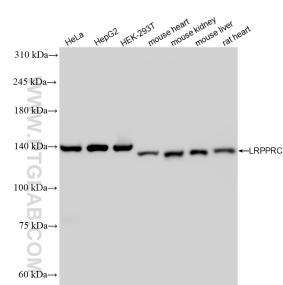
Background Information

LRPPRC (also called LRP130 or GP130) is a 130-kDa RNA-binding protein of the pentatricopeptide repeat family. LRPPRC localizes primarily to the mitochondria, where it binds to poly(A) mRNA. It plays a role in the translation or stability of mitochondrially encoded cytochrome c oxidase (COX) subunits. LRPPRC has also been shown to regulate nuclear gene transcription and to bind specific RNA molecules in both the nucleus and the cytoplasm. Mutations in the LRPPRC gene are associated with the French-Canadian type of Leigh syndrome.

Storage

Storage:
Store at -20°C. Stable for one year after shipment.
Storage Buffer:
PBS with 0.02% sodium azide and 50% glycerol, pH7.3
Aliquoting is unnecessary for -20°C storage

Selected Validation Data



Various lysates were subjected to SDS PAGE followed by western blot with 86616-2-RR (LRPPRC antibody) at dilution of 1:10000 incubated at room temperature for 1.5 hours.