

For Research Use Only

LRPPRC Recombinant monoclonal antibody, PBS Only (Detector)

Catalog Number: 86616-2-PBS



Basic Information

Catalog Number: 86616-2-PBS	GenBank Accession Number: BC050311	Purification Method: Protein A purification
Source: Rabbit	GeneID (NCBI): 10128	CloneNo.: 251577F1
Isotype: IgG	UNIPROT ID: P42704	
Immunogen Catalog Number: AG15452	Full Name: leucine-rich PPR-motif containing	
	Calculated MW: 1394 aa, 158 kDa	
	Observed MW: 130 kDa	

Applications

Tested Applications:
WB, Cytometric bead array, Indirect ELISA

Species Specificity:
human, mouse, rat

Background Information

LRPPRC (also called LRP130 or GP130) is a 130-kDa RNA-binding protein of the pentatricopeptide repeat family. LRPPRC localizes primarily to the mitochondria, where it binds to poly(A) mRNA. It plays a role in the translation or stability of mitochondrially encoded cytochrome c oxidase (COX) subunits. LRPPRC has also been shown to regulate nuclear gene transcription and to bind specific RNA molecules in both the nucleus and the cytoplasm. Mutations in the LRPPRC gene are associated with the French-Canadian type of Leigh syndrome.

Storage

Storage:
Store at -80°C.

The product is shipped with ice packs. Upon receipt, store it immediately at -80°C

Storage Buffer:
PBS only, pH7.3

For technical support and original validation data for this product please contact:

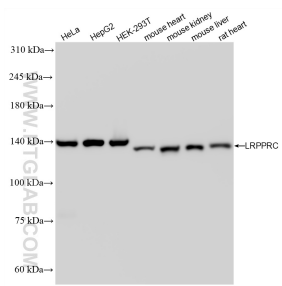
T: 4006900926

E: Proteintech-CN@ptglab.com

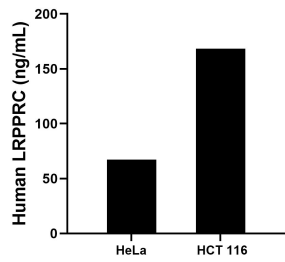
W: ptgcn.com

This product is exclusively available under Proteintech Group brand and is not available to purchase from any other manufacturer.

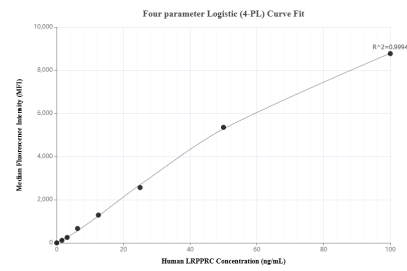
Selected Validation Data



Various lysates were subjected to SDS PAGE followed by western blot with 86616-2-RR (LRPPRC antibody) at dilution of 1:10000 incubated at room temperature for 1.5 hours. This data was developed using the same antibody clone with 86616-2-PBS in a different storage buffer formulation.



The mean LRPPRC concentration was determined to be 67.2 ng/mL in HeLa cell extract based on a 1.1 mg/mL extract load, 168.4 ng/mL in HCT 116 cell extract based on a 1.3 mg/mL extract load.



Cytometric bead array standard curve of MP02559-1, LRPPRC Recombinant Matched Antibody Pair, PBS Only. Capture antibody: 86616-1-PBS. Detection antibody: 86616-2-PBS. Standard: Ag15452. Range: 1.562-100 ng/mL.