

For Research Use Only

Mouse MASP1 Recombinant monoclonal antibody, PBS Only (Detector)

Catalog Number: 86615-2-PBS



Basic Information

Catalog Number: 86615-2-PBS	GenBank Accession Number: NM_008555.2	Purification Method: Protein A purification
Source: Rabbit	GeneID (NCBI): 17174	CloneNo.: 251559F3
Isotype: IgG	UNIPROT ID: P98064-1	
Immunogen Catalog Number: EG4420	Full Name: mannan-binding lectin serine peptidase 1	
	Calculated MW: 80 kDa	

Applications

Tested Applications:
Cytometric bead array, Sandwich ELISA, Indirect ELISA

Species Specificity:
mouse

Background Information

Storage

Storage:
Store at -80°C.
The product is shipped with ice packs. Upon receipt, store it immediately at -80°C

Storage Buffer:
PBS only, pH7.3

For technical support and original validation data for this product please contact:

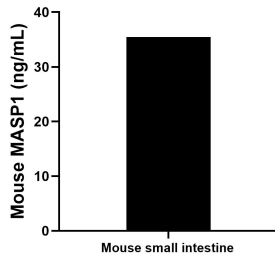
T: 4006900926

E: Proteintech-CN@ptglab.com

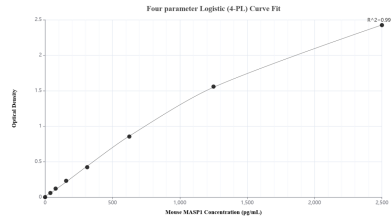
W: ptgcn.com

This product is exclusively available under Proteintech Group brand and is not available to purchase from any other manufacturer.

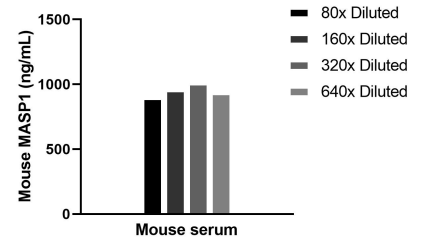
Selected Validation Data



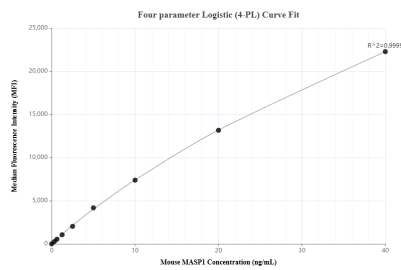
The mean MASP1 concentration was determined to be 35.5 ng/mL in mouse small intestine tissue extract based on a 4.9 mg/mL extract load.



Sandwich ELISA standard curve of MP02560-1, Mouse MASP1 Recombinant Matched Antibody Pair - PBS only. 86615-1-PBS was coated to a plate as the capture antibody and incubated with serial dilutions of standard Eg4420. 86615-2-PBS was HRP conjugated as the detection antibody. Range: 39.1-2500 pg/mL.



The mean MASP1 concentration was determined to be 946.3 ng/mL in mouse serum.



Cytometric bead array standard curve of MP02560-1, MOUSE MASP1 Recombinant Matched Antibody Pair, PBS Only. Capture antibody: 86615-1-PBS. Detection antibody: 86615-2-PBS. Standard: Eg4420. Range: 0.312-40 ng/mL.