

For Research Use Only

C9orf78 Recombinant monoclonal antibody, PBS Only (Capture)

Catalog Number:86612-1-PBS



Basic Information

Catalog Number: 86612-1-PBS	GenBank Accession Number: BC007664	Purification Method: Protein A purification
Source: Rabbit	GeneID (NCBI): 51759	CloneNo.: 251553H6
Isotype: IgG	UNIPROT ID: Q9NZ63	
Immunogen Catalog Number: AG5919	Full Name: chromosome 9 open reading frame 78	
	Calculated MW: 34 kDa	
	Observed MW: 35 kDa	

Applications

Tested Applications:
WB, IF/ICC, Cytometric bead array, Indirect ELISA

Species Specificity:
human, mouse, rat

Background Information

The function of C9orf78 remains largely unknown. The MW of this protein is 34 kDa, and this antibody specially recognises the 34 kDa protein. This antibody works well in WB, IHC and IF applications.

Storage

Storage:
Store at -80°C.
The product is shipped with ice packs. Upon receipt, store it immediately at -80°C

Storage Buffer:
PBS only, pH7.3

For technical support and original validation data for this product please contact:

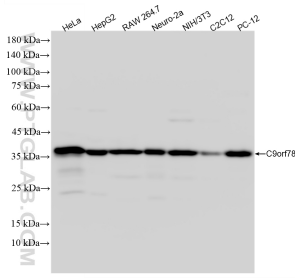
T: 4006900926

E: Proteintech-CN@ptglab.com

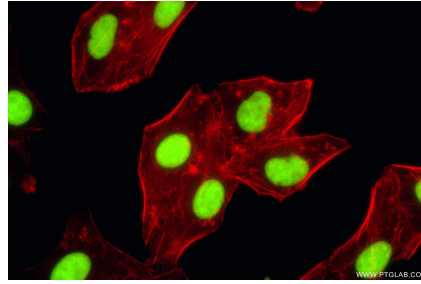
W: ptgcn.com

This product is exclusively available under Proteintech Group brand and is not available to purchase from any other manufacturer.

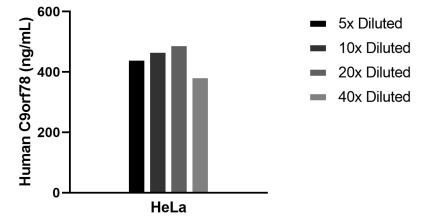
Selected Validation Data



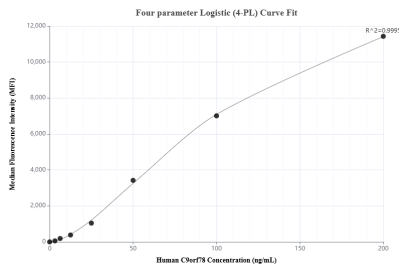
Various lysates were subjected to SDS PAGE followed by western blot with 86612-1-RR (C9orf78 antibody) at dilution of 1:3000 incubated at room temperature for 1.5 hours. This data was developed using the same antibody clone with 86612-1-PBS in a different storage buffer formulation.



Immunofluorescent analysis of (4% PFA) fixed HepG2 cells using C9orf78 antibody (86612-1-RR, Clone: 251553H6) at dilution of 1:1000 and CoraLite® 488-Conjugated Goat Anti-Rabbit IgG(H+L) (SA00013-2), CL594-Phalloidin (red). This data was developed using the same antibody clone with 86612-1-PBS in a different storage buffer formulation.



The mean C9orf78 concentration was determined to be 447.5 ng/mL in HeLa cell extract based on a 1.1 mg/mL extract load.



Cytometric bead array standard curve of MP02557-1, C9orf78 Recombinant Matched Antibody Pair, PBS Only. Capture antibody: 86612-1-PBS. Detection antibody: 86612-2-PBS. Standard: Ag5919. Range: 3.125-200 ng/mL.