

For Research Use Only

CUEDC2 Recombinant antibody, PBS Only (Capture)

Catalog Number:86610-1-PBS



Basic Information

Catalog Number: 86610-1-PBS	GenBank Accession Number: BC000262	Purification Method: Protein A purification
Concentration: 1 mg/ml	GeneID (NCBI): 79004	CloneNo.: 251583H5
Source: Rabbit	UNIPROT ID: Q9H467	
Isotype: IgG	Full Name: CUE domain containing 2	
Immunogen Catalog Number: AG13847	Calculated MW: 287 aa, 32 kDa	

Applications

Tested Applications:
Cytometric bead array, Indirect ELISA, Sample test

Species Specificity:
human

Background Information

Storage

Storage:
Store at -80°C.
The product is shipped with ice packs. Upon receipt, store it immediately at -80°C

Storage Buffer:
PBS only, pH7.3

For technical support and original validation data for this product please contact:

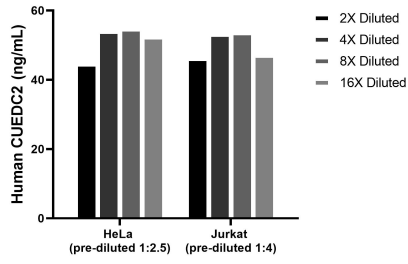
T: 4006900926

E: Proteintech-CN@ptglab.com

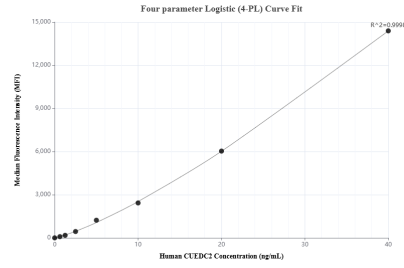
W: ptgcn.com

This product is exclusively available under Proteintech Group brand and is not available to purchase from any other manufacturer.

Selected Validation Data



The mean CUEDC2 concentration was determined to be 51.3 ng/mL in HeLa cell extract based on a 1.1 mg/mL extract load, 49.9 ng/mL in Jurkat cell extract based on a 1.2 mg/mL extract load.



Cytometric bead array standard curve of MP02553-1, CUEDC2 Recombinant Matched Antibody Pair, PBS Only. Capture antibody: 86610-1-PBS. Detection antibody: 86610-2-PBS. Standard: Ag13847. Range: 0.625-40 ng/mL.