

For Research Use Only

# GFPT2 Recombinant monoclonal antibody, PBS Only

Catalog Number:86609-3-PBS



## Basic Information

<b>Catalog Number:</b> 86609-3-PBS	<b>GenBank Accession Number:</b> BC000012	<b>Purification Method:</b> Protein A purification
<b>Source:</b> Rabbit	<b>GeneID (NCBI):</b> 9945	<b>CloneNo.:</b> 251454E5
<b>Isotype:</b> IgG	<b>UNIPROT ID:</b> O94808	
<b>Immunogen Catalog Number:</b> AG7275	<b>Full Name:</b> glutamine-fructose-6-phosphate transaminase 2	
	<b>Calculated MW:</b> 77 kDa	
	<b>Observed MW:</b> 75-77 kDa	

## Applications

**Tested Applications:**  
WB, IF/ICC, Indirect ELISA

**Species Specificity:**  
human, mouse

## Background Information

GFPT2 (Glutamine-fructose-6-phosphate transaminase 2) is a rate-limiting enzyme in hexosamine biosynthesis involved in the occurrence and progress of many cancers (PMID: 35330716, 14764791). GFPT2 plays an important role in the metabolic activity of cells, especially in their glucose metabolism. GFPT2 expression was highly correlated with EMT-related factors (PMID: 37395335). High GFPT2 expression is associated with poor prognosis in various tumors, including lung adenocarcinoma, colorectal cancer, leiomyosarcoma, and serous ovarian cancer.

## Storage

**Storage:**  
Store at -80°C.  
**The product is shipped with ice packs. Upon receipt, store it immediately at -80°C**

**Storage Buffer:**  
PBS only, pH7.3

For technical support and original validation data for this product please contact:

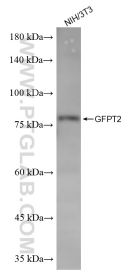
T: 4006900926

E: [Proteintech-CN@ptglab.com](mailto:Proteintech-CN@ptglab.com)

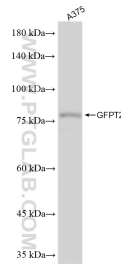
W: [ptgcn.com](http://ptgcn.com)

**This product is exclusively available under Proteintech Group brand and is not available to purchase from any other manufacturer.**

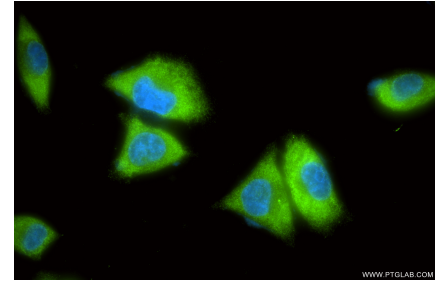
## Selected Validation Data



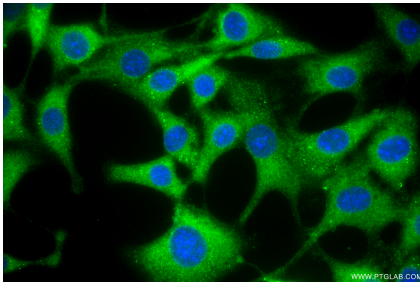
NIH/3T3 cells were subjected to SDS PAGE followed by western blot with 86609-3-RR (GFPT2 antibody) at dilution of 1:10000 incubated at room temperature for 1.5 hours. This data was developed using the same antibody clone with 86609-3-PBS in a different storage buffer formulation.



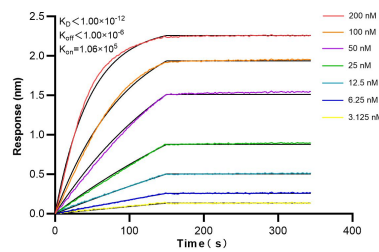
A375 cells were subjected to SDS PAGE followed by western blot with 86609-3-RR (GFPT2 antibody) at dilution of 1:10000 incubated at room temperature for 1.5 hours. This data was developed using the same antibody clone with 86609-3-PBS in a different storage buffer formulation.



Immunofluorescent analysis of (4% PFA) fixed A375 cells using GFPT2 antibody (86609-3-RR, Clone: 251454E5) at dilution of 1:200 and CoraLite®488-Conjugated Goat Anti-Rabbit IgG(H+L) (SA00013-2). This data was developed using the same antibody clone with 86609-3-PBS in a different storage buffer formulation.



Immunofluorescent analysis of (-20°C Methanol) fixed NIH/3T3 cells using GFPT2 antibody (86609-3-RR, Clone: 251454E5) at dilution of 1:200 and CoraLite®488-Conjugated Goat Anti-Rabbit IgG(H+L) (SA00013-2). This data was developed using the same antibody clone with 86609-3-PBS in a different storage buffer formulation.



Biolayer interferometry (BLI) kinetic assays of 86609-3-RR against Human GFPT2 were performed. The affinity constant is below 1 pM.