

For Research Use Only

# MTHFD2 Recombinant monoclonal antibody, PBS Only (Capture)

Catalog Number: 86608-6-PBS



## Basic Information

Catalog Number:

86608-6-PBS

Source:

Rabbit

Isotype:

IgG

Immunogen Catalog Number:

AG2911

GenBank Accession Number:

BC017054

GeneID (NCBI):

10797

UNIPROT ID:

P13995

Full Name:

methylenetetrahydrofolate  
dehydrogenase (NADP+ dependent) 2,  
methenyltetrahydrofolate  
cyclohydrolase

Calculated MW:

350 aa, 38 kDa

Purification Method:

Protein A purification

CloneNo.:

251431D5

## Applications

Tested Applications:

Sandwich ELISA, Indirect ELISA

Species Specificity:

human

## Background Information

### Storage

Storage:

Store at -80°C.

The product is shipped with ice packs. Upon receipt, store it immediately at -80°C

Storage Buffer:

PBS only, pH7.3

For technical support and original validation data for this product please contact:

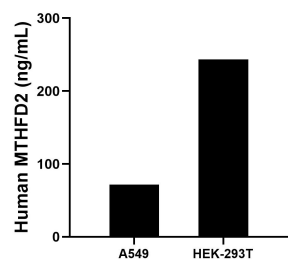
T: 4006900926

E: [Proteintech-CN@ptglab.com](mailto:Proteintech-CN@ptglab.com)

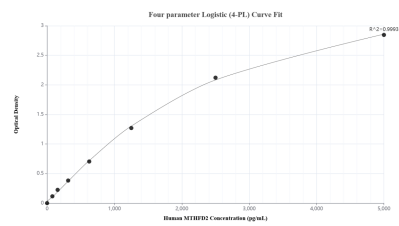
W: [ptgcn.com](http://ptgcn.com)

This product is exclusively available under Proteintech Group brand and is not available to purchase from any other manufacturer.

## Selected Validation Data



The mean MTHFD2 concentration was determined to be 71.5 ng/mL in A549 cell extract based on a 1.2 mg/mL extract load and 243.3 ng/mL in HEK-293T cell extract based on a 1.3 mg/mL extract load.



Sandwich ELISA standard curve of MP02548-2, Human MTHFD2 Recombinant Matched Antibody Pair - PBS only. 86608-6-PBS was coated to a plate as the capture antibody and incubated with serial dilutions of standard Ag2911. 86608-5-PBS was HRP conjugated as the detection antibody. Range: 78.1-5000 pg/mL.