

For Research Use Only

CCL20/MIP-3 alpha Recombinant monoclonal antibody

Catalog Number: 86607-3-RR



Basic Information

Catalog Number: 86607-3-RR	GenBank Accession Number: NM_019233.1	Purification Method: Protein A purification
Source: Rabbit	GeneID (NCBI): 29538	CloneNo.: 250116E12
Isotype: IgG	UNIPROT ID: P97884	Recommended Dilutions: WB: 1:1000-1:4000 IHC: 1:500-1:2000 IF/ICC: 1:200-1:800
Immunogen Catalog Number: EG3237	Full Name: chemokine (C-C motif) ligand 20	
	Calculated MW: 11 kDa	

Applications

Tested Applications:
WB, IHC, IF/ICC, ELISA

Species Specificity:
rat

Note-IHC: suggested antigen retrieval with TE buffer pH 9.0; (*) Alternatively, antigen retrieval may be performed with citrate buffer pH 6.0

Positive Controls:

WB: Transfected with Rat CCL20/MIP-3 alpha HEK-293T cells,
IHC: rat liver tissue, rat colon tissue
IF/ICC: Transfected CHO-K1,

Background Information

CCL20, also known as macrophage infiltrating factor protein 3 α , is a C-C chemokine that specifically binds to the receptor CCR6. CCL20 is produced in various tissues and by a wide range of immune cells, including neutrophils, natural killer cells, T-helper type 17 (Th17) cells, B cells, and various antigen-presenting cells, such as dendritic cells (DCs), Langerhans cells, and macrophages. Increased expression of CCL20 is likely involved in the increased recruitment of dendritic cells observed in fibroinflammatory diseases such as chronic obstructive pulmonary disease (COPD). CCL20 expression is increased by the proinflammatory cytokine IL-1 beta.

Storage

Storage:
Store at -20°C. Stable for one year after shipment.

Storage Buffer:
PBS with 0.02% sodium azide and 50% glycerol, pH7.3

Aliquoting is unnecessary for -20°C storage

For technical support and original validation data for this product please contact:

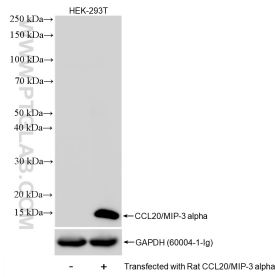
T: 4006900926

E: Proteintech-CN@ptglab.com

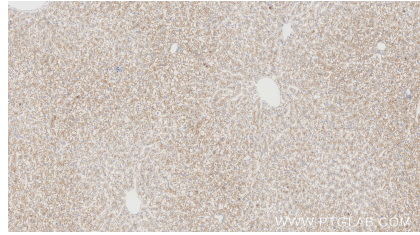
W: ptgcn.com

This product is exclusively available under Proteintech Group brand and is not available to purchase from any other manufacturer.

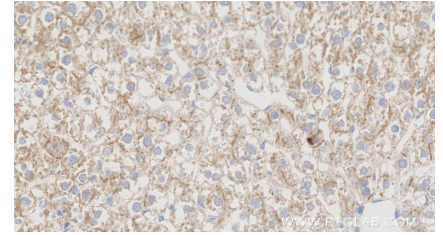
Selected Validation Data



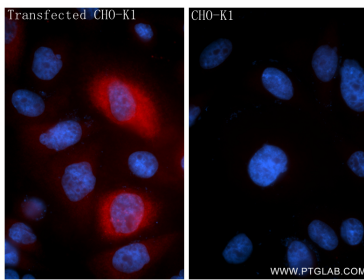
Non-transfected and rat CCL20-transfected HEK-293T cells were subjected to SDS PAGE followed by western blot with 86607-3-RR (CCL20/MIP-3 alpha antibody) at dilution of 1:2000 incubated at room temperature for 1.5 hours.



Immunohistochemical analysis of paraffin-embedded rat liver tissue slide using 86607-3-RR (CCL20/MIP-3 alpha antibody) at dilution of 1:1000 (under 10x lens). Heat mediated antigen retrieval with Tris-EDTA buffer (pH 9.0).



Immunohistochemical analysis of paraffin-embedded rat liver tissue slide using 86607-3-RR (CCL20/MIP-3 alpha antibody) at dilution of 1:1000 (under 40x lens). Heat mediated antigen retrieval with Tris-EDTA buffer (pH 9.0).



Immunofluorescent analysis of (4% PFA) fixed Transfected CHO-K1 using CCL20/MIP-3 alpha antibody (86607-3-RR, Clone: 250116E12) at dilution of 1:400 and Coralite®594-Conjugated Goat Anti-Rabbit IgG(H+L) (SA00013-4).