

For Research Use Only

RNASE1 Recombinant monoclonal antibody, PBS Only (Detector)

Catalog Number:86606-2-PBS



Basic Information

Catalog Number: 86606-2-PBS	GenBank Accession Number: NM_002933.5	Purification Method: Protein A purification
Source: Rabbit	GeneID (NCBI): 6035	CloneNo.: 251017H3
Isotype: IgG	UNIPROT ID: P07998	
Immunogen Catalog Number: EG3044	Full Name: ribonuclease, RNase A family, 1 (pancreatic)	
	Calculated MW: 18 kDa	

Applications

Tested Applications:
Sandwich ELISA, Indirect ELISA

Species Specificity:
human

Background Information

Storage

Storage:
Store at -80°C.
The product is shipped with ice packs. Upon receipt, store it immediately at -80°C

Storage Buffer:
PBS only, pH7.3

For technical support and original validation data for this product please contact:

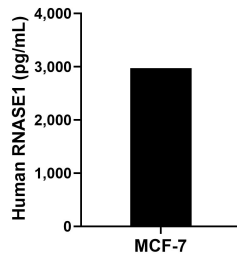
T: 4006900926

E: Proteintech-CN@ptglab.com

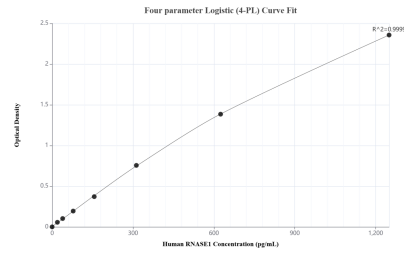
W: ptgcn.com

This product is exclusively available under Proteintech Group brand and is not available to purchase from any other manufacturer.

Selected Validation Data



The mean RNASE1 concentration was determined to be 2,974.4 pg/mL in MCF-7 cell extract based on a 1.3 mg/mL extract load.



Sandwich ELISA standard curve of MP02554-1, Human RNASE1 Recombinant Matched Antibody Pair - PBS only. 86606-1-PBS was coated to a plate as the capture antibody and incubated with serial dilutions of standard Eg3044. 86606-2-PBS was HRP conjugated as the detection antibody. Range: 19.5-1250 pg/mL