

For Research Use Only

# RNASE1 Recombinant monoclonal antibody, PBS Only (Capture)

Catalog Number:86606-1-PBS



## Basic Information

Catalog Number:

86606-1-PBS

Source:

Rabbit

Isotype:

IgG

Immunogen Catalog Number:

EG3044

GenBank Accession Number:

NM\_002933.5

GeneID (NCBI):

6035

UNIPROT ID:

P07998

Full Name:

ribonuclease, RNase A family, 1  
(pancreatic)

Calculated MW:

18 kDa

Purification Method:

Protein A purification

CloneNo.:

251017C12

## Applications

Tested Applications:

Sandwich ELISA, Indirect ELISA

Species Specificity:

human

## Background Information

### Storage

Storage:

Store at -80°C.

**The product is shipped with ice packs. Upon receipt, store it immediately at -80°C**

Storage Buffer:

PBS only, pH7.3

For technical support and original validation data for this product please contact:

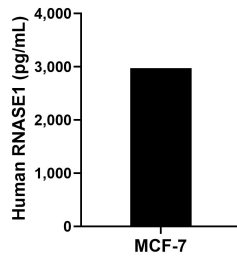
T: 4006900926

E: [Proteintech-CN@ptglab.com](mailto:Proteintech-CN@ptglab.com)

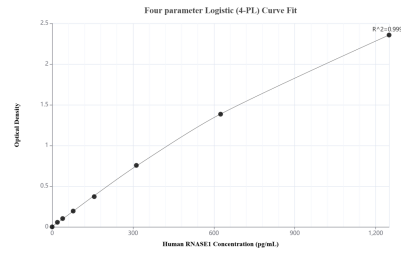
W: [ptgcn.com](http://ptgcn.com)

**This product is exclusively available under Proteintech Group brand and is not available to purchase from any other manufacturer.**

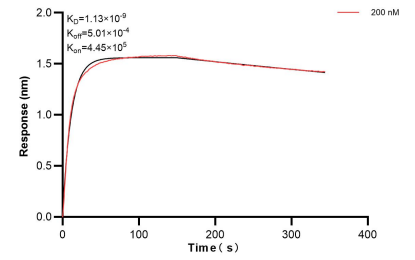
## Selected Validation Data



The mean RNASE1 concentration was determined to be 2,974.4 pg/mL in MCF-7 cell extract based on a 1.3 mg/mL extract load.



Sandwich ELISA standard curve of MP02554-1, Human RNASE1 Recombinant Matched Antibody Pair - PBS only. 86606-1-PBS was coated to a plate as the capture antibody and incubated with serial dilutions of standard Eg3044. 86606-2-PBS was HRP conjugated as the detection antibody. Range: 19.5-1250 pg/mL.



Bi-layer interferometry (BLI) kinetic assay of 86606-1-PBS against Human RNASE1 were performed. The affinity constant is 1.13 nM.