

For Research Use Only

# FCGR2A Recombinant monoclonal antibody, PBS Only (Detector)

Catalog Number:86588-1-PBS



## Basic Information

<b>Catalog Number:</b> 86588-1-PBS	<b>GenBank Accession Number:</b> NM_001136219.3	<b>Purification Method:</b> Protein A purification
<b>Source:</b> Rabbit	<b>GeneID (NCBI):</b> 2212	<b>CloneNo.:</b> 251087D7
<b>Isotype:</b> IgG	<b>UNIPROT ID:</b> P12318-1	
<b>Immunogen Catalog Number:</b> EG2713	<b>Full Name:</b> Fc fragment of IgG, low affinity IIa, receptor (CD32)	
	<b>Calculated MW:</b> 35 kDa	

## Applications

**Tested Applications:**  
Cytometric bead array, Indirect ELISA

**Species Specificity:**  
human

## Background Information

### Storage

**Storage:**  
Store at -80°C.  
**The product is shipped with ice packs. Upon receipt, store it immediately at -80°C**

**Storage Buffer:**  
PBS only, pH7.3

For technical support and original validation data for this product please contact:

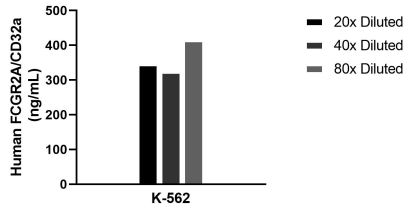
T: 4006900926

E: [Proteintech-CN@ptglab.com](mailto:Proteintech-CN@ptglab.com)

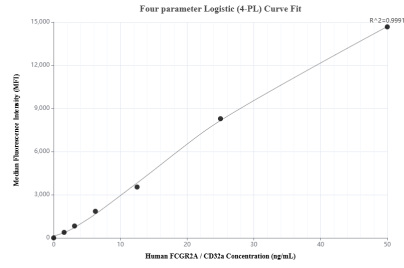
W: [ptgcn.com](http://ptgcn.com)

**This product is exclusively available under Proteintech Group brand and is not available to purchase from any other manufacturer.**

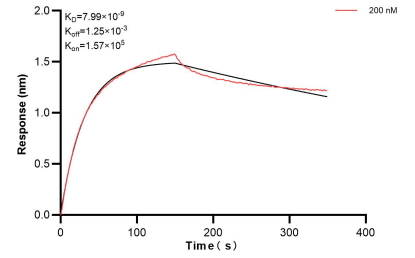
## Selected Validation Data



The mean FCGR2A / CD32a concentration was determined to be 360.3 ng/mL in K-562 cell extract based on a 1.2 mg/mL extract load.



Cytometric bead array standard curve of MP02532-1, FCGR2A / CD32a Recombinant Matched Antibody Pair, PBS Only. Capture antibody: 86588-2-PBS. Detection antibody: 86588-1-PBS. Standard: Eg2713. Range: 0.781-50 ng/mL.



Bi-layer interferometry (BLI) kinetic assay of 86588-1-PBS against Human FCGR2A was performed. The affinity constant is 7.99 nM.