

For Research Use Only

# GLRX3 Recombinant monoclonal antibody, PBS Only (Detector)

Catalog Number: 86587-2-PBS



## Basic Information

Catalog Number:

86587-2-PBS

Source:

Rabbit

Isotype:

IgG

Immunogen Catalog Number:

AG1775

GenBank Accession Number:

BC014372

GeneID (NCBI):

10539

UNIPROT ID:

O76003

Full Name:

glutaredoxin 3

Calculated MW:

37 kDa

Purification Method:

Protein A purification

CloneNo.:

25153085

## Applications

Tested Applications:

Cytometric bead array, Indirect ELISA

Species Specificity:

human

## Background Information

### Storage

Storage:

Store at -80°C.

The product is shipped with ice packs. Upon receipt, store it immediately at -80°C

Storage Buffer:

PBS only, pH7.3

For technical support and original validation data for this product please contact:

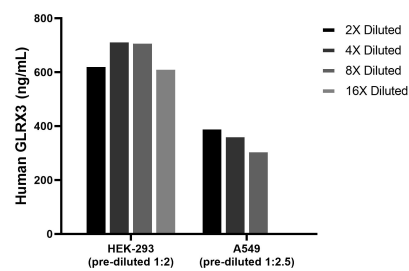
T: 4006900926

E: [Proteintech-CN@ptglab.com](mailto:Proteintech-CN@ptglab.com)

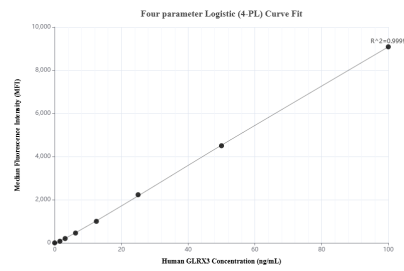
W: [ptgcn.com](http://ptgcn.com)

This product is exclusively available under Proteintech Group brand and is not available to purchase from any other manufacturer.

## Selected Validation Data



The mean GLRX3 concentration was determined to be 669.5 ng/mL in HEK-293 cell extract based on a 1.1 mg/mL extract load, 358.1 ng/mL in A549 cell extract based on a 1.2 mg/mL extract load.



Cytometric bead array standard curve of MP02531-1, GLRX3 Recombinant Matched Antibody Pair, PBS Only. Capture antibody: 86587-1-PBS. Detection antibody: 86587-2-PBS. Standard: Ag1775. Range: 1.562-100 ng/mL.