

For Research Use Only

GLRX3 Recombinant monoclonal antibody, PBS Only (Capture)

Catalog Number: 86587-1-PBS



Basic Information

Catalog Number:	86587-1-PBS	GenBank Accession Number:	BC014372	Purification Method:	Protein A purification
Source:	Rabbit	GeneID (NCBI):	10539	CloneNo.:	251530F9
Isotype:	IgG	UNIPROT ID:	O76003		
Immunogen Catalog Number:	AG1775	Full Name:	glutaredoxin 3		
		Calculated MW:	37 kDa		
		Observed MW:	37-40 kDa		

Applications

Tested Applications:
WB, Cytometric bead array, Indirect ELISA

Species Specificity:
human, mouse, rat

Background Information

GLRX3 (Glutaredoxin-3) is also named as PICOT, TXNL2. Mammalian glutaredoxin 3 is an essential protein involved in the regulation of signal transduction, for instance during immune cell activation and development of cardiac hypertrophy, presumably in response to redox signals (PMID:20226171). Glnx3 could take a pivotal role in colon and lung cancer cells during the tumorigenesis, which is expressed in lung and colon cancers consistently and preferentially (PMID:19797004).

Storage

Storage:
Store at -80°C.

The product is shipped with ice packs. Upon receipt, store it immediately at -80°C

Storage Buffer:
PBS only, pH7.3

For technical support and original validation data for this product please contact:

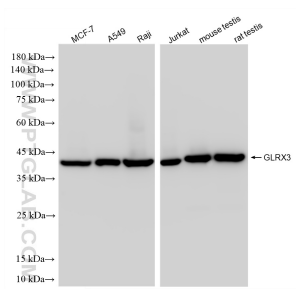
T: 4006900926

E: Proteintech-CN@ptglab.com

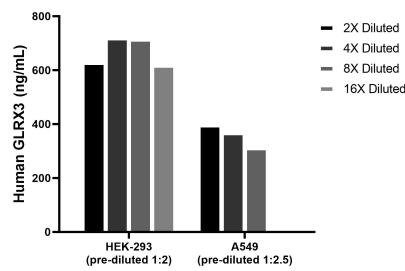
W: ptgcn.com

This product is exclusively available under Proteintech Group brand and is not available to purchase from any other manufacturer.

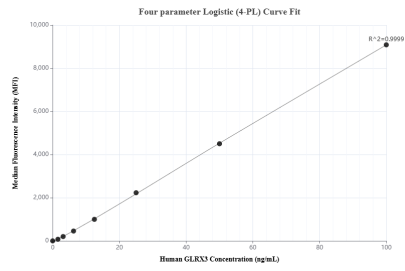
Selected Validation Data



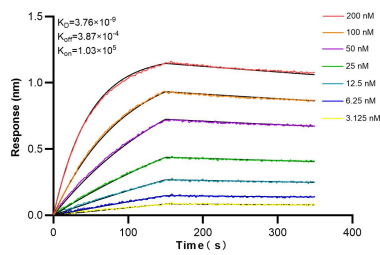
Various lysates were subjected to SDS PAGE followed by western blot with 86587-1-RR (GLRX3 antibody) at dilution of 1:10000 incubated at room temperature for 1.5 hours. This data was developed using the same antibody clone with 86587-1-PBS in a different storage buffer formulation.



The mean GLRX3 concentration was determined to be 669.5 ng/mL in HEK-293 cell extract based on a 1.1 mg/mL extract load, 358.1 ng/mL in A549 cell extract based on a 1.2 mg/mL extract load.



Cytometric bead array standard curve of MP02531-1, GLRX3 Recombinant Matched Antibody Pair, PBS Only. Capture antibody: 86587-1-PBS. Detection antibody: 86587-2-PBS. Standard: Ag1775. Range: 1.562-100 ng/mL.



Biolayer interferometry (BLI) kinetic assays of 86587-1-RR against Human GLRX3 were performed. The affinity constant is 3.76 nM.