

For Research Use Only

# PPP1R12C Recombinant monoclonal antibody, PBS Only

Catalog Number: 86583-1-PBS



## Basic Information

Catalog Number:	86583-1-PBS	GenBank Accession Number:	BC008030	Purification Method:	Protein A purification
Concentration:	1000 µg/ml	GeneID (NCBI):	54776	CloneNo.:	251442C1
Source:	Rabbit	UNIPROT ID:	Q9BZL4		
Isotype:	IgG	Full Name:	protein phosphatase 1, regulatory (inhibitor) subunit 12C		
Immunogen Catalog Number:	AG18559	Calculated MW:	782 aa, 85 kDa		
		Observed MW:	90-100 kDa		

## Applications

Tested Applications:  
WB, Indirect ELISA  
Species Specificity:  
human

## Background Information

PPP1R12C is a subunit of myosin phosphatase. PPP1R12C regulates the catalytic activity of protein phosphatase 1 delta and assembly of the actin cytoskeleton.

## Storage

Storage:  
Store at -80°C.  
The product is shipped with ice packs. Upon receipt, store it immediately at -80°C  
Storage Buffer:  
PBS only, pH7.3

For technical support and original validation data for this product please contact:

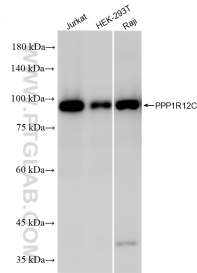
T: 4006900926

E: [Proteintech-CN@ptglab.com](mailto:Proteintech-CN@ptglab.com)

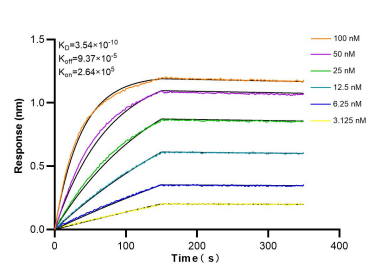
W: [ptgcn.com](http://ptgcn.com)

This product is exclusively available under Proteintech Group brand and is not available to purchase from any other manufacturer.

## Selected Validation Data



Various lysates were subjected to SDS PAGE followed by western blot with 86583-1-RR (PPP1R12C antibody) at dilution of 1:5000 incubated at room temperature for 1.5 hours. This data was developed using the same antibody clone with 86583-1-PBS in a different storage buffer formulation.



Biolayer interferometry (BLI) kinetic assays of 86583-1-RR against Human PPP1R12C were performed. The affinity constant is 0.354 nM.