

For Research Use Only

RAI14 Recombinant monoclonal antibody, PBS Only

Catalog Number: 86581-1-PBS



Basic Information

Catalog Number: 86581-1-PBS	GenBank Accession Number: BC052988	Purification Method: Protein A purification
Source: Rabbit	GeneID (NCBI): 26064	CloneNo.: 251495G12
Isotype: IgG	UNIPROT ID: Q9P0K7	
Immunogen Catalog Number: AG11708	Full Name: retinoic acid induced 14	
	Calculated MW: 980 aa, 110 kDa	
	Observed MW: 110 kDa	

Applications

Tested Applications:
WB, IF/ICC, Indirect ELISA

Species Specificity:
human, mouse, rat

Background Information

RAI14 (retinoic acid-induced protein 14, also called ankycorbin or NORPEG) was originally identified in human retinal pigment epithelial cells as a retinoic-acid-responsive gene. Through direct interaction with actin-binding partners such as palladin and TARA, RAI14 orchestrates focal adhesion dynamics, cell polarity and mechanosensing; in epithelia it stabilizes tight-junction complexes, whereas in neurons it localizes to the dendritic-spine neck where it promotes spine maintenance by antagonizing F-actin depolymerization. Consistent with its cytoskeletal role, RAI14 has emerged as a context-dependent modulator of several signalling cascades.

Storage

Storage:
Store at -80°C.
The product is shipped with ice packs. Upon receipt, store it immediately at -80°C

Storage Buffer:
PBS only, pH7.3

For technical support and original validation data for this product please contact:

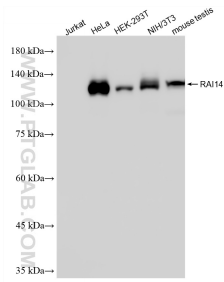
T: 4006900926

E: Proteintech-CN@ptglab.com

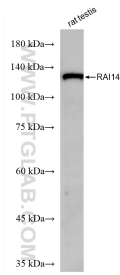
W: ptgcn.com

This product is exclusively available under Proteintech Group brand and is not available to purchase from any other manufacturer.

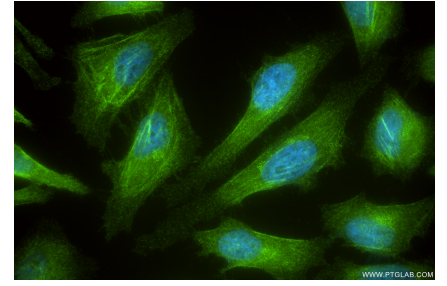
Selected Validation Data



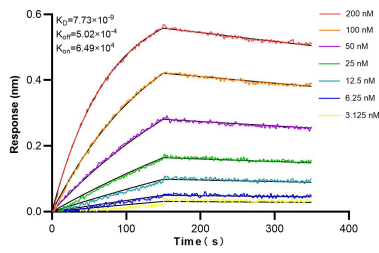
Various lysates were subjected to SDS PAGE followed by western blot with 86581-1-RR (RAI14 antibody) at dilution of 1:10000 incubated at room temperature for 1.5 hours. This data was developed using the same antibody clone with 86581-1-PBS in a different storage buffer formulation.



rat testis tissue were subjected to SDS PAGE followed by western blot with 86581-1-RR (RAI14 antibody) at dilution of 1:10000 incubated at room temperature for 1.5 hours. This data was developed using the same antibody clone with 86581-1-PBS in a different storage buffer formulation.



Immunofluorescent analysis of (4% PFA) fixed HeLa cells using RAI14 antibody (86581-1-RR, Clone: 251495G12) at dilution of 1:500 and CoraLite®488-Conjugated Goat Anti-Rabbit IgG(H+L) (SA00013-2). This data was developed using the same antibody clone with 86581-1-PBS in a different storage buffer formulation.



Biolayer interferometry (BLI) kinetic assays of 86581-1-RR against Human RAI14 were performed. The affinity constant is 7.73 nM.