

For Research Use Only

Mouse Pon3 Recombinant monoclonal antibody, PBS Only (Capture)

Catalog Number: 86577-2-PBS



Basic Information

Catalog Number:

86577-2-PBS

Concentration:

1 mg/ml

Source:

Rabbit

Isotype:

IgG

Immunogen Catalog Number:

EG2743

GenBank Accession Number:

NM_173006.1

GeneID (NCBI):

269823

UNIPROT ID:

Q62087

Full Name:

paraoxonase 3

Calculated MW:

39 kDa

Purification Method:

Protein A purification

CloneNo.:

251535A2

Applications

Tested Applications:

Cytometric bead array, Sandwich ELISA, Indirect ELISA

Species Specificity:

mouse

Background Information

Storage

Storage:

Store at -80°C.

The product is shipped with ice packs. Upon receipt, store it immediately at -80°C

Storage Buffer:

PBS only, pH7.3

For technical support and original validation data for this product please contact:

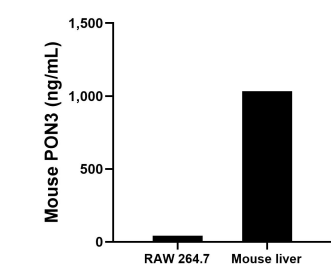
T: 4006900926

E: Proteintech-CN@ptglab.com

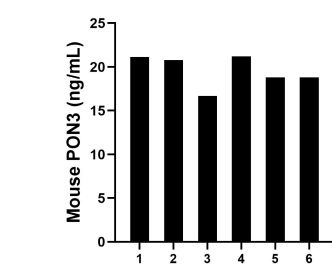
W: ptgcn.com

This product is exclusively available under Proteintech Group brand and is not available to purchase from any other manufacturer.

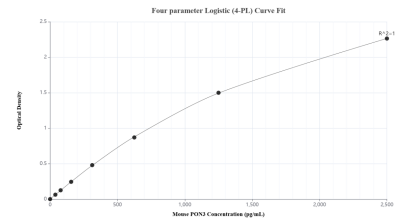
Selected Validation Data



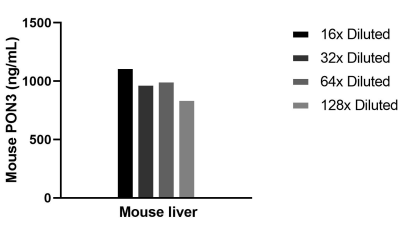
The mean PON3 concentration was determined to be 41.6 ng/mL in RAW 264.7 cell extract based on a 1.3 mg/mL extract load and 1,033.8 ng/mL in mouse liver tissue extract based on a 8.4 mg/mL extract load.



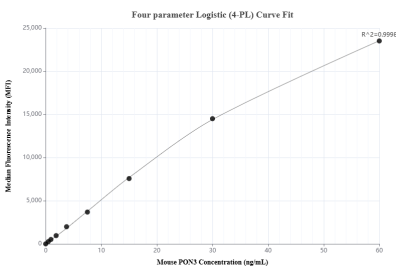
Serum of six mice was measured. The PON3 concentration of detected samples was determined to be 19.6 ng/mL with a range of 16.7-21.2 ng/mL.



Sandwich ELISA standard curve of MP02543-1, Mouse PON3 Recombinant Matched Antibody Pair - PBS only. 86577-2-PBS was coated to a plate as the capture antibody and incubated with serial dilutions of standard Eg2743. 86577-1-PBS was HRP conjugated as the detection antibody. Range: 39.1-2500 pg/mL.



The mean PON3 concentration was determined to be 986.3 ng/mL in Mouse liver tissue extract based on a 8.4 mg/mL extract load.



Cytometric bead array standard curve of MP02543-1, MOUSE PON3 Recombinant Matched Antibody Pair, PBS Only. Capture antibody: 86577-2-PBS. Detection antibody: 86577-1-PBS. Standard: Eg2743. Range: 0.469-60 ng/mL.