

For Research Use Only

# RIPK3 Recombinant monoclonal antibody, PBS Only

Catalog Number: 86568-2-PBS



## Basic Information

<b>Catalog Number:</b> 86568-2-PBS	<b>GenBank Accession Number:</b> BC062584	<b>Purification Method:</b> Protein A purification
<b>Source:</b> Rabbit	<b>GeneID (NCBI):</b> 11035	<b>CloneNo.:</b> 251363G12
<b>Isotype:</b> IgG	<b>UNIPROT ID:</b> Q9Y572	
<b>Immunogen Catalog Number:</b> AG30337	<b>Full Name:</b> receptor-interacting serine-threonine kinase 3	
	<b>Calculated MW:</b> 518 aa, 57 kDa	
	<b>Observed MW:</b> 57 kDa	

## Applications

**Tested Applications:**  
WB, IHC, IF/ICC, Indirect ELISA

**Species Specificity:**  
human

## Background Information

RIPK3, also named as RIP3, a Ser/Thr kinase of RIP (Receptor Interacting Protein) family, is recruited to the TNFR1 signaling complex through RIP and has been shown to mediate apoptosis induction and NF- $\kappa$ B activation. RIPK3 is a nucleocytoplasmic shuttling protein and its unconventional nuclear localization signal (NLS, 442-472 aa) is sufficient to trigger apoptosis in the nucleus (PMID:18533105). It has 3 isoforms produced by alternative splicing. RIPK3 might form a homodimer within cells, and its apoptotic activity may not be required for this dimerization (PMID:18533105).

## Storage

**Storage:**  
Store at -80°C.  
**The product is shipped with ice packs. Upon receipt, store it immediately at -80°C**

**Storage Buffer:**  
PBS only, pH7.3

For technical support and original validation data for this product please contact:

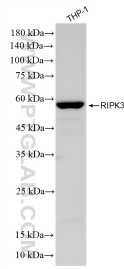
T: 4006900926

E: [Proteintech-CN@ptglab.com](mailto:Proteintech-CN@ptglab.com)

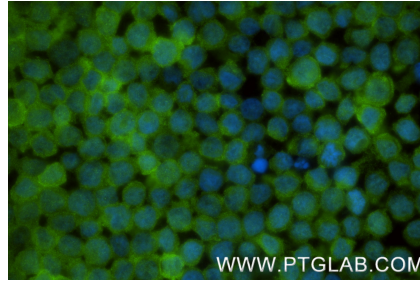
W: [ptgcn.com](http://ptgcn.com)

**This product is exclusively available under Proteintech Group brand and is not available to purchase from any other manufacturer.**

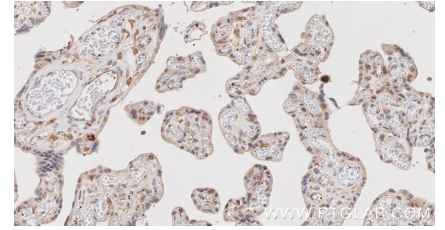
## Selected Validation Data



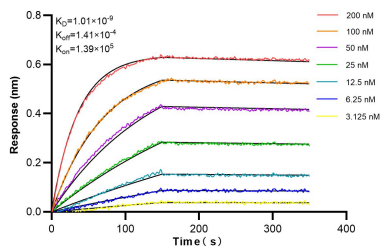
THP-1 cells were subjected to SDS PAGE followed by western blot with 86568-2-RR (RIPK3 antibody) at dilution of 1:3000 incubated at room temperature for 1.5 hours. This data was developed using the same antibody clone with 86568-2-PBS in a different storage buffer formulation.



Immunofluorescent analysis of (4% PFA) fixed THP-1 cells using RIPK3 antibody (86568-2-RR, Clone: 251363G12) at dilution of 1:200 and CoraLite® 488-Conjugated Goat Anti-Rabbit IgG(H+L) (SA00013-2). This data was developed using the same antibody clone with 86568-2-PBS in a different storage buffer formulation.



Immunohistochemical analysis of paraffin-embedded human placenta tissue slide using 86568-2-RR (RIPK3 antibody) at dilution of 1:400 (under 40x lens). Heat mediated antigen retrieval with Tris-EDTA buffer (pH 9.0). This data was developed using the same antibody clone with 86568-2-PBS in a different storage buffer formulation.



Biolayer interferometry (BLI) kinetic assays of 86568-2-RR against Human RIPK3 were performed. The affinity constant is 1.01 nM.