

For Research Use Only

Mouse Mmp8 Recombinant monoclonal antibody, PBS Only (Detector)

Catalog Number: 86567-1-PBS



Basic Information

Catalog Number:

86567-1-PBS

Source:

Rabbit

Isotype:

IgG

Immunogen Catalog Number:

EG3161

GenBank Accession Number:

NM_008611.4

GeneID (NCBI):

17394

UNIPROT ID:

O70138

Full Name:

matrix metalloproteinase 8

Calculated MW:

53 kDa

Purification Method:

Protein A purification

CloneNo.:

250323D5

Applications

Tested Applications:

Sandwich ELISA, Indirect ELISA

Species Specificity:

mouse

Background Information

Storage

Storage:

Store at -80°C.

The product is shipped with ice packs. Upon receipt, store it immediately at -80°C

Storage Buffer:

PBS only, pH7.3

For technical support and original validation data for this product please contact:

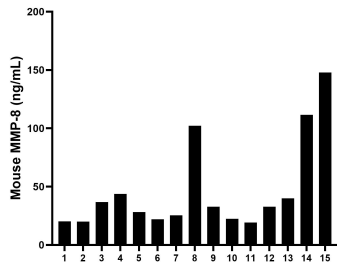
T: 4006900926

E: Proteintech-CN@ptglab.com

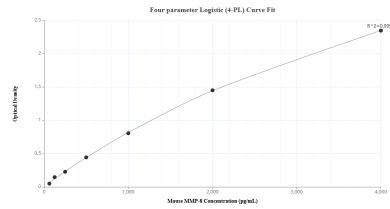
W: ptgcn.com

This product is exclusively available under Proteintech Group brand and is not available to purchase from any other manufacturer.

Selected Validation Data



Serum of mice was measured. The mouse MMP-8 concentration of detected samples was determined to be 47.01 ng/mL with a range of 19.2 - 147.85 ng/mL.



Sandwich ELISA standard curve of MP02831-1, Mouse MMP-8 Recombinant Matched Antibody Pair - PBS only. 86567-2-PBS was coated to a plate as the capture antibody and incubated with serial dilutions of standard Eg3161. 86567-1-PBS was HRP conjugated as the detection antibody. Range: 62.5-4000 pg/mL