

For Research Use Only

LAIR2 Recombinant monoclonal antibody, PBS Only (Detector)

Catalog Number: 86559-2-PBS



Basic Information

Catalog Number:

86559-2-PBS

Source:

Rabbit

Isotype:

IgG

Immunogen Catalog Number:

EG4247

GenBank Accession Number:

BC069366

GeneID (NCBI):

3904

UNIPROT ID:

Q6I554

Full Name:

leukocyte-associated immunoglobulin-like receptor 2

Calculated MW:

152 aa, 16 kDa

Purification Method:

Protein A purification

CloneNo.:

250338D1

Applications

Tested Applications:

Sandwich ELISA, Indirect ELISA

Species Specificity:

human

Background Information

Storage

Storage:

Store at -80°C.

The product is shipped with ice packs. Upon receipt, store it immediately at -80°C

Storage Buffer:

PBS only, pH7.3

For technical support and original validation data for this product please contact:

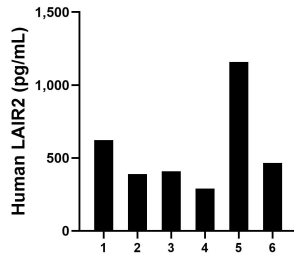
T: 4006900926

E: Proteintech-CN@ptglab.com

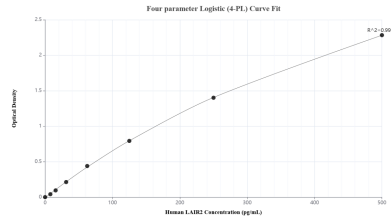
W: ptgcn.com

This product is exclusively available under Proteintech Group brand and is not available to purchase from any other manufacturer.

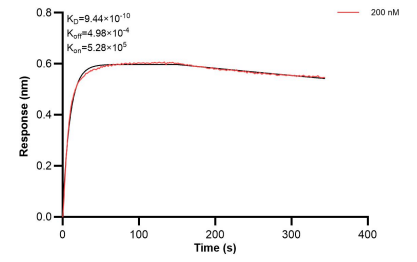
Selected Validation Data



Urine of six individual healthy human donors was measured. The LAIR2 concentration of detected samples was determined to be 555.7 pg/mL with a range of 289.8-1,158.5 pg/mL.



Sandwich ELISA standard curve of MP02633-1, Human LAIR2 Recombinant Matched Antibody Pair - PBS only. 86559-3-PBS was coated to a plate as the capture antibody and incubated with serial dilutions of standard Eg4247. 86559-2-PBS was HRP conjugated as the detection antibody. Range: 7.81-500 pg/mL



Bi-layer interferometry (BLI) kinetic assay of 86559-2-PBS against Human LAIR2 was performed. The affinity constant is 0.944 nM.