

For Research Use Only

KYNU Recombinant antibody, PBS Only

Catalog Number: 86555-3-PBS



Basic Information

| | | |
|--|--|---|
| Catalog Number: 86555-3-PBS | GenBank Accession Number: BC000879 | Purification Method: Protein A purification |
| Concentration: 1000 µg/ml | GeneID (NCBI): 8942 | CloneNo.: 251437D1 |
| Source: Rabbit | UNIPROT ID: Q16719 | |
| Isotype: IgG | Full Name: kynureninase (L-kynurenine hydrolase) | |
| Immunogen Catalog Number: AG2365 | Calculated MW: 465aa, 52 kDa; 307aa, 35 kDa | |
| | Observed MW: 45-52 kDa | |

Applications

Tested Applications:
WB, Indirect ELISA

Species Specificity:
human

Background Information

KYNU(kynureninase) is also named as L-kynurenine hydrolase and belongs to the kynureninase family. It is a pyridoxal-5'-phosphate-(pyridoxal-P)-dependent enzyme that catalyses the cleavage of L-kynurenine and L-3-hydroxykynurenine into anthranilic and 3-hydroxyanthranilic acids, respectively(PMID:8706755). In SDS-PAGE, it can detect a 48 kDa band lower than the predicted molecular weight of 52 kDa due to limited proteolysis of the enzyme which might occur during handling of the protein(PMID:8706755).

Storage

Storage:
Store at -80°C.
The product is shipped with ice packs. Upon receipt, store it immediately at -80°C

Storage Buffer:
PBS only, pH7.3

For technical support and original validation data for this product please contact:

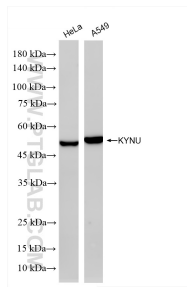
T: 4006900926

E: Proteintech-CN@ptglab.com

W: ptgcn.com

This product is exclusively available under Proteintech Group brand and is not available to purchase from any other manufacturer.

Selected Validation Data



Various lysates were subjected to SDS PAGE followed by western blot with 86555-3-RR (KYNu antibody) at dilution of 1:10000 incubated at room temperature for 1.5 hours. This data was developed using the same antibody clone with 86555-3-PBS in a different storage buffer formulation.