

For Research Use Only

KYNU Recombinant monoclonal antibody, PBS Only (Capture)

Catalog Number: 86555-2-PBS



Basic Information

Catalog Number:

86555-2-PBS

Source:

Rabbit

Isotype:

IgG

Immunogen Catalog Number:

AG2365

GenBank Accession Number:

BC000879

GeneID (NCBI):

8942

UNIPROT ID:

Q16719

Full Name:

kynureninase (L-kynurenine hydrolase)

Calculated MW:

465aa,52 kDa; 307aa,35 kDa

Purification Method:

Protein A purification

CloneNo.:

251437B3

Applications

Tested Applications:

Cytometric bead array, Sandwich ELISA, Indirect ELISA

Species Specificity:

human

Background Information

Storage

Storage:

Store at -80°C.

The product is shipped with ice packs. Upon receipt, store it immediately at -80°C

Storage Buffer:

PBS only, pH7.3

For technical support and original validation data for this product please contact:

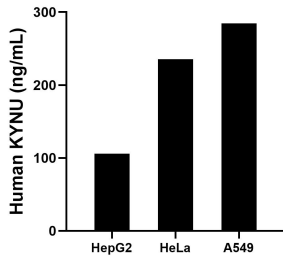
T: 4006900926

E: Proteintech-CN@ptglab.com

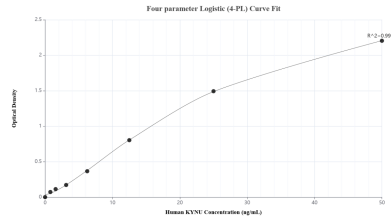
W: ptgcn.com

This product is exclusively available under Proteintech Group brand and is not available to purchase from any other manufacturer.

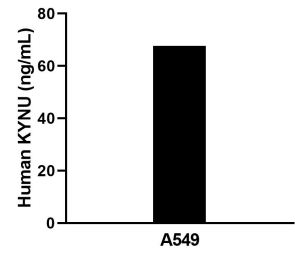
Selected Validation Data



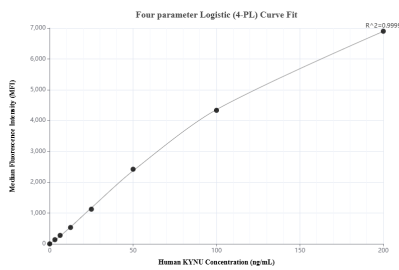
The mean KYNU concentration was determined to be 105.94 ng/mL in HepG2 cell extract based on a 1.20 mg/mL extract load, 235.47 ng/mL in HeLa cell extract based on a 1.20 mg/mL extract load and 284.39 ng/mL in A549 cell extract based on a 1.20 mg/mL extract load.



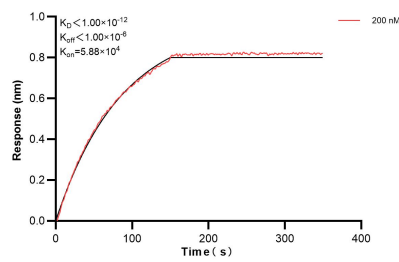
Sandwich ELISA standard curve of MP02527-2, Human KYNU Recombinant Matched Antibody Pair - PBS only. 86555-2-PBS was coated to a plate as the capture antibody and incubated with serial dilutions of standard Ag2365. 86555-5-PBS was HRP conjugated as the detection antibody. Range: 0.781-50 ng/mL.



The mean KYNU concentration was determined to be 68.5 ng/mL in A549 cell extract based on a 1.2 mg/mL extract load.



Cytometric bead array standard curve of MP02527-1, KYNU Recombinant Matched Antibody Pair, PBS Only. Capture antibody: 86555-2-PBS. Detection antibody: 86555-1-PBS. Standard: Ag2365. Range: 3.125-200 ng/mL.



Bi-layer interferometry (BLI) kinetic assays of 86555-2-PBS against Human KYNU were performed. The affinity constant is below 1 pM.