

For Research Use Only

# KYNU Recombinant monoclonal antibody, PBS Only (Detector)

Catalog Number:86555-1-PBS



## Basic Information

Catalog Number:

86555-1-PBS

Source:

Rabbit

Isotype:

IgG

Immunogen Catalog Number:

AG2365

GenBank Accession Number:

BC000879

GeneID (NCBI):

8942

UNIPROT ID:

Q16719

Full Name:

kynureninase (L-kynurenine hydrolase)

Calculated MW:

465aa,52 kDa; 307aa,35 kDa

Purification Method:

Protein A purification

CloneNo.:

251437G10

## Applications

Tested Applications:

Cytometric bead array, Indirect ELISA

Species Specificity:

human

## Background Information

### Storage

Storage:

Store at -80°C.

**The product is shipped with ice packs. Upon receipt, store it immediately at -80°C**

Storage Buffer:

PBS only, pH7.3

For technical support and original validation data for this product please contact:

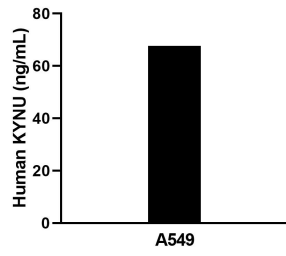
T: 4006900926

E: [Proteintech-CN@ptglab.com](mailto:Proteintech-CN@ptglab.com)

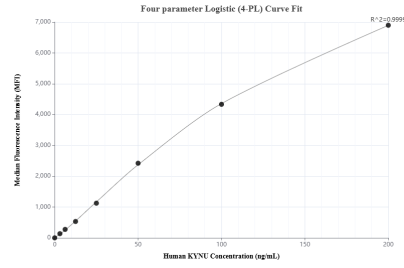
W: [ptgcn.com](http://ptgcn.com)

**This product is exclusively available under Proteintech Group brand and is not available to purchase from any other manufacturer.**

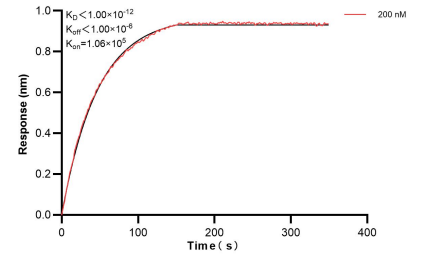
## Selected Validation Data



The mean KYNU concentration was determined to be 68.5 ng/mL in A549 cell extract based on a 1.2 mg/mL extract load.



Cytometric bead array standard curve of MP02527-1, KYNU Recombinant Matched Antibody Pair, PBS Only. Capture antibody: 86555-2-PBS. Detection antibody: 86555-1-PBS. Standard: Ag2365. Range: 3.125-200 ng/mL



Bi-layer interferometry (BLI) kinetic assays of 86555-1-PBS against Human KYNU were performed. The affinity constant is below 1 pM.