

# MMS2 Recombinant monoclonal antibody

Catalog Number: 86551-3-RR

## Basic Information

<b>Catalog Number:</b> 86551-3-RR	<b>GenBank Accession Number:</b> BC007051	<b>Purification Method:</b> Protein A purification
<b>Source:</b> Rabbit	<b>GeneID (NCBI):</b> 7336	<b>CloneNo.:</b> 251485F12
<b>Isotype:</b> IgG	<b>UNIPROT ID:</b> Q15819	<b>Recommended Dilutions:</b> WB: 1:5000-1:50000 IHC: 1:1000-1:4000
<b>Immunogen Catalog Number:</b> AG1111	<b>Full Name:</b> ubiquitin-conjugating enzyme E2 variant 2	
	<b>Calculated MW:</b> 16 kDa	
	<b>Observed MW:</b> 16-18 kDa	

## Applications

### Tested Applications:

WB, IHC, ELISA

### Species Specificity:

human, mouse, rat

**Note-IHC: suggested antigen retrieval with TE buffer pH 9.0; (\*) Alternatively, antigen retrieval may be performed with citrate buffer pH 6.0**

### Positive Controls:

**WB:** A375 cells, HeLa cells, HEK-293 cells, mouse liver tissue, rat liver tissue, mouse kidney tissue, rat kidney tissue

**IHC:** human colon cancer tissue,

## Background Information

MMS2 encodes a 137-amino acid, 15.2-kDa protein with significant sequence homology to a conserved family of ubiquitin-conjugating (Ubc) proteins (PMID: 9576943). Mms2 is a ubiquitin E2-variant protein with a very well-documented function in the tolerance pathway that protects both human and yeast cells from the lethal and mutagenic effects of DNA damage (PMID: 36934633). A high expression level of human MMS2 is associated with poor survival prognosis in different cancer diseases (PMID: 36934633).

## Storage

### Storage:

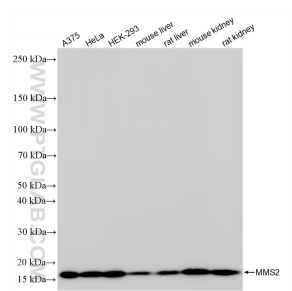
Store at -20°C. Stable for one year after shipment.

### Storage Buffer:

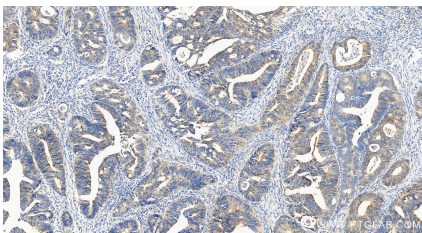
PBS with 0.02% sodium azide and 50% glycerol, pH7.3

Aliquoting is unnecessary for -20°C storage

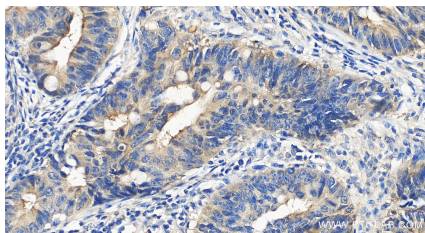
## Selected Validation Data



Various lysates were subjected to SDS PAGE followed by western blot with 86551-3-RR (MMS2 antibody) at dilution of 1:10000 incubated at room temperature for 1.5 hours.



Immunohistochemical analysis of paraffin-embedded human colon cancer tissue slide using 86551-3-RR (MMS2 antibody) at dilution of 1:2000 (under 20x lens). Heat mediated antigen retrieval with Tris-EDTA buffer (pH 9.0).



Immunohistochemical analysis of paraffin-embedded human colon cancer tissue slide using 86551-3-RR (MMS2 antibody) at dilution of 1:2000 (under 20x lens). Heat mediated antigen retrieval with Tris-EDTA buffer (pH 9.0).