

For Research Use Only

CS Recombinant antibody, PBS Only (Capture)

Catalog Number: 86549-2-PBS



Basic Information

Catalog Number:

86549-2-PBS

Concentration:

1 mg/ml

Source:

Rabbit

Isotype:

IgG

Immunogen Catalog Number:

AG9117

GenBank Accession Number:

BC010106

GeneID (NCBI):

1431

UNIPROT ID:

O75390

Full Name:

citrate synthase

Calculated MW:

466 aa, 52 kDa

Purification Method:

Protein A purification

CloneNo.:

251433D8

Applications

Tested Applications:

Cytometric bead array, Indirect ELISA, Sample test

Species Specificity:

human

Background Information

Storage

Storage:

Store at -80°C.

The product is shipped with ice packs. Upon receipt, store it immediately at -80°C

Storage Buffer:

PBS only, pH7.3

For technical support and original validation data for this product please contact:

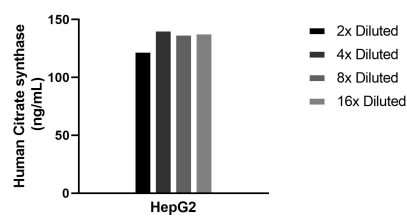
T: 4006900926

E: Proteintech-CN@ptglab.com

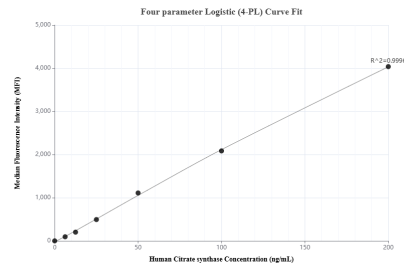
W: ptgcn.com

This product is exclusively available under Proteintech Group brand and is not available to purchase from any other manufacturer.

Selected Validation Data



The mean Citrate synthase concentration was determined to be 135.1 ng/mL in HepG2 cell extract based on a 1.3 mg/mL extract load.



Cytometric bead array standard curve of MP02513-1, Citrate synthase Recombinant Matched Antibody Pair, PBS Only. Capture antibody: 86549-2-PBS. Detection antibody: 86549-1-PBS. Standard: Ag9117. Range: 6.25-200 ng/mL.