

For Research Use Only

# Siglec-5/CD170 Recombinant antibody, PBS Only (Capture)

Catalog Number: 86546-2-PBS



## Basic Information

<b>Catalog Number:</b> 86546-2-PBS	<b>GenBank Accession Number:</b> NM_003830.4	<b>Purification Method:</b> Protein A purification
<b>Concentration:</b> 1 mg/ml	<b>GeneID (NCBI):</b> 8778	<b>CloneNo.:</b> 250743B1
<b>Source:</b> Rabbit	<b>UNIPROT ID:</b> O15389	
<b>Isotype:</b> IgG	<b>Full Name:</b> sialic acid binding Ig-like lectin 5	
<b>Immunogen Catalog Number:</b> EG1673	<b>Calculated MW:</b> 61kDa	

## Applications

**Tested Applications:**  
Sandwich ELISA, Indirect ELISA, Sample test

**Species Specificity:**  
human

## Background Information

### Storage

**Storage:**  
Store at -80°C.  
**The product is shipped with ice packs. Upon receipt, store it immediately at -80°C**

**Storage Buffer:**  
PBS only, pH7.3

For technical support and original validation data for this product please contact:

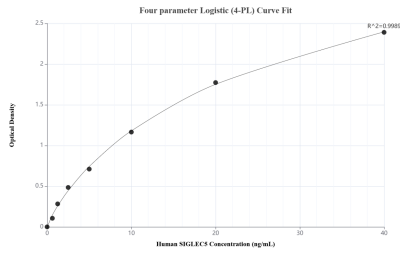
T: 4006900926

E: [Proteintech-CN@ptglab.com](mailto:Proteintech-CN@ptglab.com)

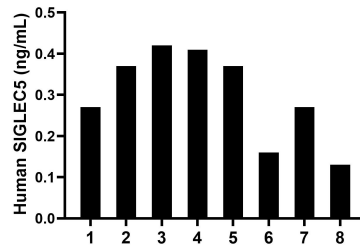
W: [ptgcn.com](http://ptgcn.com)

**This product is exclusively available under Proteintech Group brand and is not available to purchase from any other manufacturer.**

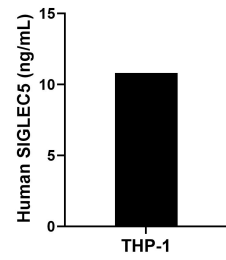
## Selected Validation Data



Sandwich ELISA standard curve of MP02480-1, Human SIGLEC5 Recombinant Matched Antibody Pair - PBS only. 86546-2-PBS was coated to a plate as the capture antibody and incubated with serial dilutions of standard Eg1673. 86546-1-PBS was HRP conjugated as the detection antibody. Range: 0.625-40 ng/mL



Plasma of eight individual healthy human donors was measured. The SIGLEC5 concentration of detected samples was determined to be 0.30 ng/mL with a range of 0.13-0.42 ng/mL



The mean SIGLEC5 concentration was determined to be 10.81 ng/mL in THP-1 cell extract based on a 1.20 mg/mL extract load.