

For Research Use Only

# Siglec-5/CD170 Recombinant antibody, PBS Only (Detector)

Catalog Number: 86546-1-PBS



## Basic Information

Catalog Number: 86546-1-PBS	GenBank Accession Number: NM_003830.4	Purification Method: Protein A purification
Concentration: 1 mg/ml	GeneID (NCBI): 8778	CloneNo.: 250743B9
Source: Rabbit	UNIPROT ID: O15389	
Isotype: IgG	Full Name: sialic acid binding Ig-like lectin 5	
Immunogen Catalog Number: EG1673	Calculated MW: 61kDa	

## Applications

**Tested Applications:**  
Sandwich ELISA, Indirect ELISA, Sample test

**Species Specificity:**  
human

## Background Information

### Storage

**Storage:**  
Store at -80°C.  
**The product is shipped with ice packs. Upon receipt, store it immediately at -80°C**

**Storage Buffer:**  
PBS only, pH7.3

For technical support and original validation data for this product please contact:

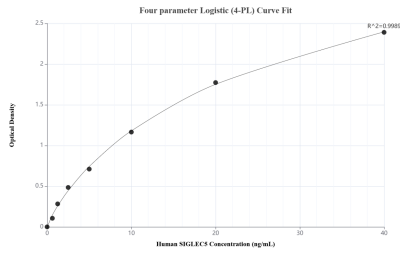
T: 4006900926

E: Proteintech-CN@ptglab.com

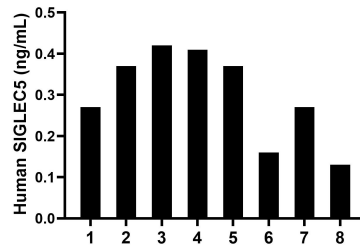
W: ptgcn.com

**This product is exclusively available under Proteintech Group brand and is not available to purchase from any other manufacturer.**

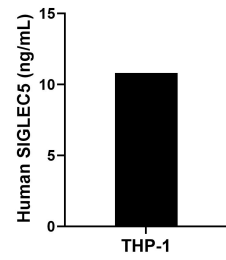
## Selected Validation Data



Sandwich ELISA standard curve of MP02480-1, Human SIGLEC5 Recombinant Matched Antibody Pair - PBS only. 86546-2-PBS was coated to a plate as the capture antibody and incubated with serial dilutions of standard Eg1673. 86546-1-PBS was HRP conjugated as the detection antibody. Range: 0.625-40 ng/mL



Plasma of eight individual healthy human donors was measured. The SIGLEC5 concentration of detected samples was determined to be 0.30 ng/mL with a range of 0.13-0.42 ng/mL



The mean SIGLEC5 concentration was determined to be 10.81 ng/mL in THP-1 cell extract based on a 1.20 mg/mL extract load.