

For Research Use Only

# MSPR/Ron/CD136 Recombinant monoclonal antibody, PBS Only (Detector)

Catalog Number: 86539-1-PBS



## Basic Information

<b>Catalog Number:</b> 86539-1-PBS	<b>GenBank Accession Number:</b> NM_002447.4	<b>Purification Method:</b> Protein A purification
<b>Concentration:</b> 1 mg/ml	<b>GeneID (NCBI):</b> 4486	<b>CloneNo.:</b> 251102E4
<b>Source:</b> Rabbit	<b>UNIPROT ID:</b> Q04912-1	
<b>Isotype:</b> IgG	<b>Full Name:</b> macrophage stimulating 1 receptor (c-met-related tyrosine kinase)	
<b>Immunogen Catalog Number:</b> EG3493	<b>Calculated MW:</b> 152 kDa	

## Applications

**Tested Applications:**  
Cytometric bead array, Sandwich ELISA, Indirect ELISA

**Species Specificity:**  
human

## Background Information

### Storage

**Storage:**  
Store at -80°C.  
**The product is shipped with ice packs. Upon receipt, store it immediately at -80°C**

**Storage Buffer:**  
PBS only, pH7.3

For technical support and original validation data for this product please contact:

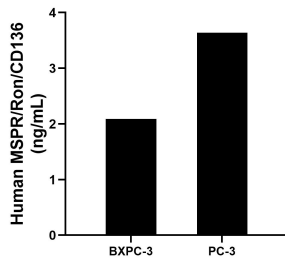
T: 4006900926

E: [Proteintech-CN@ptglab.com](mailto:Proteintech-CN@ptglab.com)

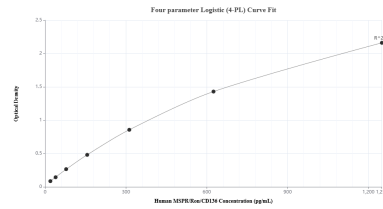
W: [ptgcn.com](http://ptgcn.com)

**This product is exclusively available under Proteintech Group brand and is not available to purchase from any other manufacturer.**

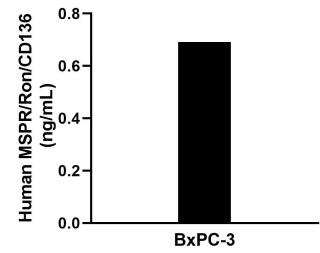
## Selected Validation Data



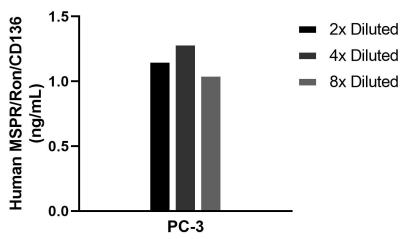
The mean MSPR/Ron/CD136 concentration was determined to be 2.09 ng/mL in BxPC-3 cell extract based on a 1.2 mg/mL extract load and 3.64 ng/mL in PC-3 cell extract based on a 1.3 mg/mL extract load.



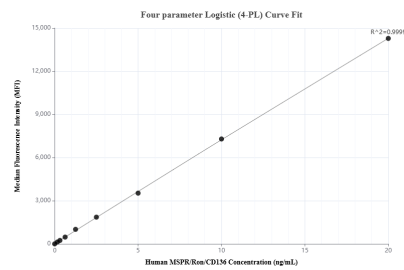
Sandwich ELISA standard curve of MP02494-1, Human MSPR/Ron/CD136 Recombinant Matched Antibody Pair - PBS only. 86539-2-PBS was coated to a plate as the capture antibody and incubated with serial dilutions of standard Eg3493. 86539-1-PBS was HRP conjugated as the detection antibody. Range: 19.5-1250 pg/mL



The mean MSPR/Ron/CD136 concentration was determined to be 0.7 ng/mL in BxPC-3 cell extract based on a 5.4 mg/mL extract load.



The mean MSPR/Ron/CD136 concentration was determined to be 1.2 ng/mL in PC-3 cell extract based on a 1.1 mg/mL extract load.



Cytometric bead array standard curve of MP02494-1, MSPR/Ron/CD136 Recombinant Matched Antibody Pair, PBS Only. Capture antibody: 86539-2-PBS. Detection antibody: 86539-1-PBS. Standard: Eg3493. Range: 0.156-20 ng/mL