

For Research Use Only

# SKIV2L2 Recombinant monoclonal antibody, PBS Only (Capture)

Catalog Number: 86536-2-PBS



## Basic Information

Catalog Number:

86536-2-PBS

Source:

Rabbit

Isotype:

IgG

Immunogen Catalog Number:

AG3414

GenBank Accession Number:

BC028604

GeneID (NCBI):

23517

UNIPROT ID:

P42285

Full Name:

superkiller viralicidic activity 2-like 2  
(S. cerevisiae)

Calculated MW:

1042 aa, 118 kDa

Purification Method:

Protein A purification

CloneNo.:

251430D10

## Applications

Tested Applications:

Cytometric bead array, Indirect ELISA

Species Specificity:

human

## Background Information

### Storage

Storage:

Store at -80°C.

**The product is shipped with ice packs. Upon receipt, store it immediately at -80°C**

Storage Buffer:

PBS only, pH7.3

For technical support and original validation data for this product please contact:

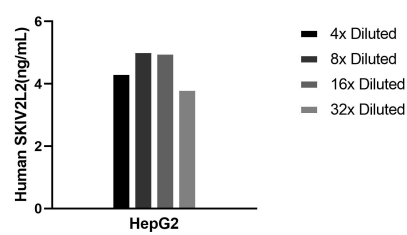
T: 4006900926

E: [Proteintech-CN@ptglab.com](mailto:Proteintech-CN@ptglab.com)

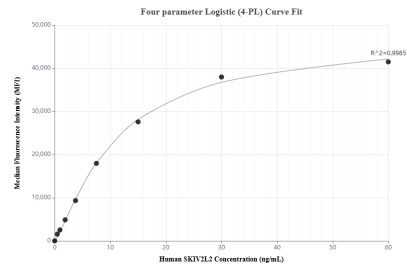
W: [ptgcn.com](http://ptgcn.com)

**This product is exclusively available under Proteintech Group brand and is not available to purchase from any other manufacturer.**

## Selected Validation Data



The mean SKIV2L2 concentration was determined to be 4.6 ng/mL in HepG2 cell extract based on a 1.1 mg/mL extract load.



Cytometric bead array standard curve of MP02496-1, SKIV2L2 Recombinant Matched Antibody Pair, PBS Only. Capture antibody: 86536-2-PBS. Detection antibody: 86536-1-PBS. Standard: Ag3414. Range: 0.469-60 ng/mL.