

For Research Use Only

# SKIV2L2 Recombinant monoclonal antibody, PBS Only (Detector)

Catalog Number: 86536-1-PBS



## Basic Information

Catalog Number: 86536-1-PBS	GenBank Accession Number: BC028604	Purification Method: Protein A purification
Source: Rabbit	GeneID (NCBI): 23517	CloneNo.: 251430D11
Isotype: IgG	UNIPROT ID: P42285	
Immunogen Catalog Number: AG3414	Full Name: superkiller viralicidic activity 2-like 2 (S. cerevisiae)	
	Calculated MW: 1042 aa, 118 kDa	
	Observed MW: 118 kDa	

## Applications

**Tested Applications:**  
WB, IF/ICC, Cytometric bead array, Indirect ELISA

**Species Specificity:**  
human, mouse

## Background Information

SKIV2L2 (Ski2-like RNA helicase 2, also called Mtr4) is an evolutionarily conserved 3' → 5' RNA helicase belonging to the Ski2-like subfamily of DExH-box helicases. SKIV2L2 is an essential component of the nuclear exosome targeting (NEXT) complex, where it acts as the major ATP-dependent motor that threads RNA substrates into the catalytic core of the RNA exosome for processing and degradation. Through this activity, SKIV2L2 regulates the turnover of aberrant pre-mRNAs, non-coding RNAs, and promoter-associated RNAs, thereby influencing gene expression, ribosomal RNA biogenesis, and maintenance of nuclear RNA homeostasis. It plays a role in cell differentiation and spermatogenesis. Clinically, germline mutations in SKIV2L2 have been associated with tricho-hepato-enteric syndrome, highlighting its importance in intestinal and hepatic development. (PMID: 39863862)

## Storage

**Storage:**  
Store at -80°C.  
**The product is shipped with ice packs. Upon receipt, store it immediately at -80°C**

**Storage Buffer:**  
PBS only, pH7.3

For technical support and original validation data for this product please contact:

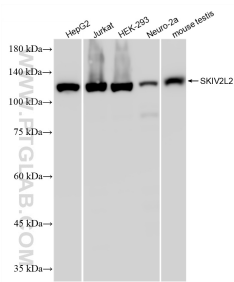
T: 4006900926

E: [Proteintech-CN@ptglab.com](mailto:Proteintech-CN@ptglab.com)

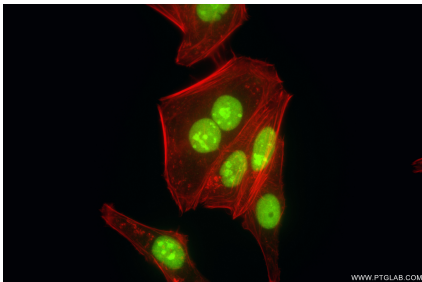
W: [ptgcn.com](http://ptgcn.com)

**This product is exclusively available under Proteintech Group brand and is not available to purchase from any other manufacturer.**

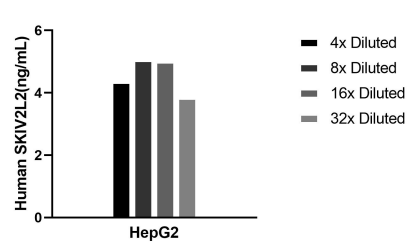
Selected Validation Data



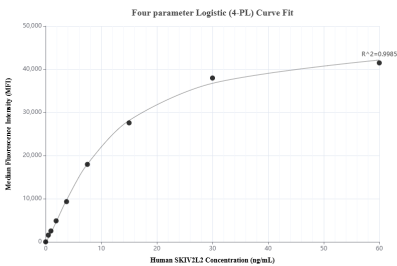
Various lysates were subjected to SDS PAGE followed by western blot with 86536-1-RR (SKIV2L2 antibody) at dilution of 1:10000 incubated at room temperature for 1.5 hours. This data was developed using the same antibody clone with 86536-1-PBS in a different storage buffer formulation.



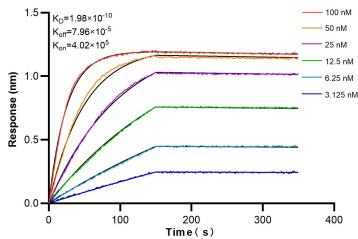
Immunofluorescent analysis of (4% PFA) fixed HepG2 cells using SKIV2L2 antibody (86536-1-RR, Clone: 251430D11) at dilution of 1:800 and CoraLite® 488-Conjugated Goat Anti-Rabbit IgG(H+L) (SA00013-2), CL594-Phalloidin (red). This data was developed using the same antibody clone with 86536-1-PBS in a different storage buffer formulation.



The mean SKIV2L2 concentration was determined to be 4.6 ng/mL in HepG2 cell extract based on a 1.1 mg/mL extract load.



Cytometric bead array standard curve of MP02496-1, SKIV2L2 Recombinant Matched Antibody Pair, PBS Only. Capture antibody: 86536-2-PBS. Detection antibody: 86536-1-PBS. Standard: Ag3414. Range: 0.469-60 ng/mL



Biolayer interferometry (BLI) kinetic assays of 86536-1-RR against Human SKIV2L2 were performed. The affinity constant is 0.198 nM.