

For Research Use Only

LOXL1 Recombinant monoclonal antibody, PBS Only (Capture)

Catalog Number: 86534-1-PBS



Basic Information

Catalog Number:

86534-1-PBS

Source:

Rabbit

Isotype:

IgG

Immunogen Catalog Number:

AG24293

GenBank Accession Number:

BC015090

GeneID (NCBI):

4016

UNIPROT ID:

Q08397

Full Name:

lysyl oxidase-like 1

Calculated MW:

63 kDa

Observed MW:

60-63 kDa

Purification Method:

Protein A purification

CloneNo.:

251345F4

Applications

Tested Applications:

WB, Sandwich ELISA, Indirect ELISA

Species Specificity:

human

Background Information

Three LOXL1 variants are seen: a band of 64 kDa matching the predicted full-length form lacking the secretory signal peptide, a band of 67 kDa presumed to be the full-length form with the signal peptide, and a band of 36 kDa matching the cleavage product.

Storage

Storage:

Store at -80°C.

The product is shipped with ice packs. Upon receipt, store it immediately at -80°C

Storage Buffer:

PBS only, pH7.3

For technical support and original validation data for this product please contact:

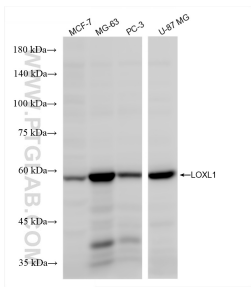
T: 4006900926

E: Proteintech-CN@ptglab.com

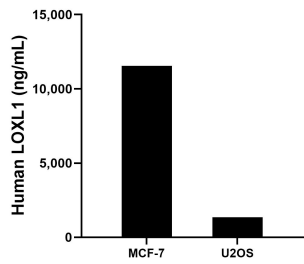
W: ptgcn.com

This product is exclusively available under Proteintech Group brand and is not available to purchase from any other manufacturer.

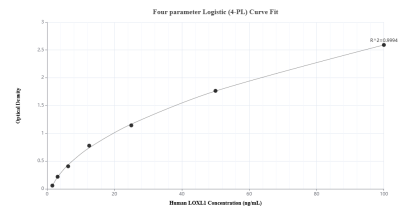
Selected Validation Data



Various lysates were subjected to SDS PAGE followed by western blot with 86534-1-RR (LOXL1 antibody) at dilution of 1:1000 incubated at room temperature for 1.5 hours. This data was developed using the same antibody clone with 86534-1-PBS in a different storage buffer formulation.



The mean LOXL1 concentration was determined to be 11,541.0 ng/mL in MCF-7 cell extract based on a 1.2 mg/mL extract load and 1,341.0 ng/mL in U2OS cell extract based on a 1.2 mg/mL extract load.



Sandwich ELISA standard curve of MP02828-1, Human LOXL1 Recombinant Matched Antibody Pair - PBS only. 86534-1-PBS was coated to a plate as the capture antibody and incubated with serial dilutions of standard Ag24293. 86534-3-PBS was HRP conjugated as the detection antibody. Range: 1.56-100 ng/mL