

For Research Use Only

# RPL23 Recombinant antibody

Catalog Number: 86520-1-RR



## Basic Information

Catalog Number:

86520-1-RR

Concentration:

1000 µg/ml

Source:

Rabbit

Isotype:

IgG

Immunogen Catalog Number:

AG9120

GenBank Accession Number:

BC010114

GeneID (NCBI):

9349

UNIPROT ID:

P62829

Full Name:

ribosomal protein L23

Calculated MW:

140 aa, 15 kDa

Observed MW:

15 kDa

Purification Method:

Protein A purification

CloneNo.:

251372C7

Recommended Dilutions:

WB: 1:5000-1:50000

IF/ICC: 1:150-1:600

## Applications

Tested Applications:

WB, IF/ICC, ELISA

Species Specificity:

human, mouse, rat

Positive Controls:

WB : HeLa cells, HEK-293 cells, Jurkat cells, BxPC-3 cells, NIH/3T3 cells, PC-12 cells

IF/ICC : HeLa cells,

## Background Information

### Storage

Storage:

Store at -20°C. Stable for one year after shipment.

Storage Buffer:

PBS with 0.02% sodium azide and 50% glycerol, pH7.3

Aliquoting is unnecessary for -20°C storage

For technical support and original validation data for this product please contact:

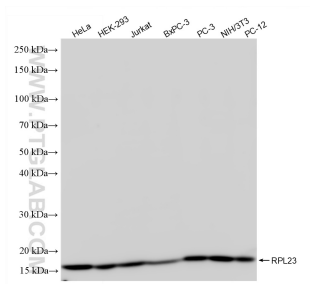
T: 4006900926

E: [Proteintech-CN@ptglab.com](mailto:Proteintech-CN@ptglab.com)

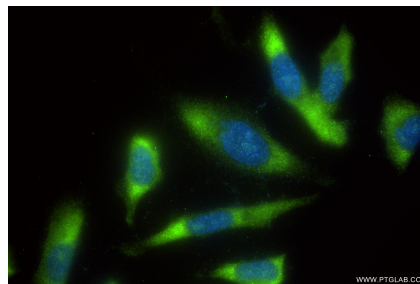
W: [ptgcn.com](http://ptgcn.com)

This product is exclusively available under Proteintech Group brand and is not available to purchase from any other manufacturer.

## Selected Validation Data



Various lysates were subjected to SDS PAGE followed by western blot with 86520-1-RR (RPL23 antibody) at dilution of 1:10000 incubated at room temperature for 1.5 hours.



Immunofluorescent analysis of (-20°C Ethanol) fixed HeLa cells using RPL23 antibody (86520-1-RR, Clone: 251372C7 ) at dilution of 1:300 and CoraLite® 488-Conjugated Goat Anti-Rabbit IgG(H+L) (SA00013-2).