

For Research Use Only

RPL23 Recombinant antibody, PBS Only

Catalog Number: 86520-1-PBS



Basic Information

Catalog Number:

86520-1-PBS

Concentration:

1000 µg/ml

Source:

Rabbit

Isotype:

IgG

Immunogen Catalog Number:

AG9120

GenBank Accession Number:

BC010114

GeneID (NCBI):

9349

UNIPROT ID:

P62829

Full Name:

ribosomal protein L23

Calculated MW:

140 aa, 15 kDa

Observed MW:

15 kDa

Purification Method:

Protein A purification

CloneNo.:

251372C7

Applications

Tested Applications:

WB, IF/ICC, Indirect ELISA

Species Specificity:

human, mouse, rat

Background Information

Storage

Storage:

Store at -80°C.

The product is shipped with ice packs. Upon receipt, store it immediately at -80°C

Storage Buffer:

PBS only, pH7.3

For technical support and original validation data for this product please contact:

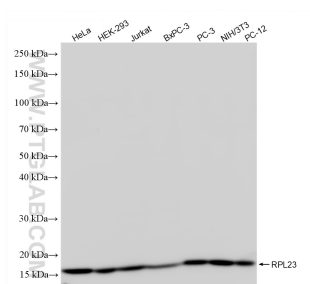
T: 4006900926

E: Proteintech-CN@ptglab.com

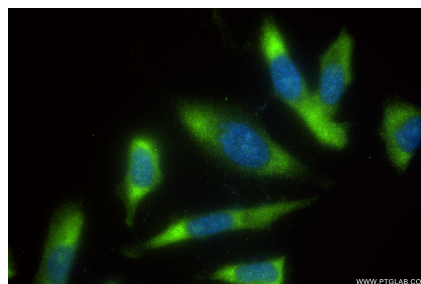
W: ptgcn.com

This product is exclusively available under Proteintech Group brand and is not available to purchase from any other manufacturer.

Selected Validation Data



Various lysates were subjected to SDS PAGE followed by western blot with 86520-1-RR (RPL23 antibody) at dilution of 1:10000 incubated at room temperature for 1.5 hours. This data was developed using the same antibody clone with 86520-1-PBS in a different storage buffer formulation.



Immunofluorescent analysis of (-20°C Ethanol) fixed HeLa cells using RPL23 antibody (86520-1-RR, Clone: 251372C7) at dilution of 1:300 and CoraLite® 488-Conjugated Goat Anti-Rabbit IgG(H+L) (SA00013-2). This data was developed using the same antibody clone with 86520-1-PBS in a different storage buffer formulation.