

ALDH1A2 Recombinant antibody

Catalog Number: 86518-1-RR

Basic Information

Catalog Number:

86518-1-RR

Concentration:

1000 µg/ml

Source:

Rabbit

Isotype:

IgG

Immunogen Catalog Number:

AG5062

GenBank Accession Number:

BC030589

GeneID (NCBI):

8854

UNIPROT ID:

O94788

Full Name:aldehyde dehydrogenase 1 family,
member A2**Calculated MW:**

518 aa, 57 kDa

Observed MW:

53-57 kDa

Purification Method:

Protein A purification

CloneNo.:

251371D10

Recommended Dilutions:

WB: 1:5000-1:50000

IF/ICC: 1:250-1:1000

Applications

Tested Applications:

WB, IF/ICC, ELISA

Species Specificity:

human, mouse, rat

Positive Controls:WB : mouse spleen tissue, rat spleen tissue, mouse
testis tissue, rat testis tissue, human testis

IF/ICC : K-562 cells,

Background Information

ALDH1A2(aldehyde dehydrogenase family 1 member A2) is also named as RALDH2(retinal dehydrogenase 2) and belongs to the aldehyde dehydrogenase family. It is a cytosolic homotetramer(56.7 kDa subunits) exhibiting complex expression patterns throughout embryonic development. ALDH1A2 plays a role in retinoid metabolism during embryonic development where it is considered to be the major retinoic acid-synthesizing enzyme during early embryogenesis(PMID:20735668). Its expression is reduced in primary prostate tumors compared with normal prostate tissue suggested that it is normally expressed in the epithelial compartment of prostate tissue(PMID:16166285).It has 2 isoforms produced by alternative splicing.

Storage

Storage:

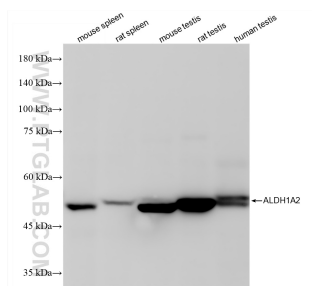
Store at -20°C. Stable for one year after shipment.

Storage Buffer:

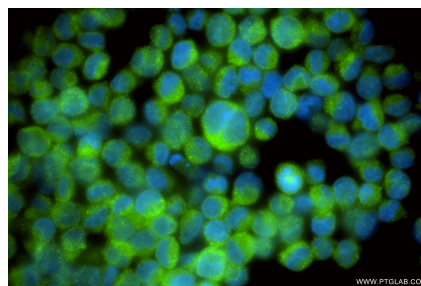
PBS with 0.02% sodium azide and 50% glycerol, pH7.3

Aliquoting is unnecessary for -20°C storage

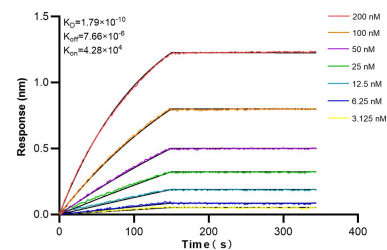
Selected Validation Data



Various lysates were subjected to SDS PAGE followed by western blot with 86518-1-RR (ALDH1A2 antibody) at dilution of 1:10000 incubated at room temperature for 1.5 hours.



Immunofluorescent analysis of (4% PFA) fixed K-562 cells using ALDH1A2 antibody (86518-1-RR, Clone: 251371D10) at dilution of 1:500 and CoraLite® 488-Conjugated Goat Anti-Rabbit IgG(H+L) (SA00013-2).



Biolayer interferometry (BLI) kinetic assays of 86518-1-RR against Human ALDH1A2 were performed. The affinity constant is 0.179 nM.