

For Research Use Only

KLK11 Recombinant monoclonal antibody, PBS Only (Detector)

Catalog Number: 86517-2-PBS



Basic Information

Catalog Number: 86517-2-PBS	GenBank Accession Number: NM_144947.2	Purification Method: Protein A purification
Concentration: 1 mg/ml	GeneID (NCBI): 11012	CloneNo.: 251323E5
Source: Rabbit	UNIPROT ID: Q9UBX7-2	
Isotype: IgG	Full Name: kallikrein-related peptidase 11	
Immunogen Catalog Number: EG2890	Calculated MW: 31 kDa	

Applications

Tested Applications:
Sandwich ELISA, Indirect ELISA

Species Specificity:
human

Background Information

Storage

Storage:
Store at -80°C.
The product is shipped with ice packs. Upon receipt, store it immediately at -80°C

Storage Buffer:
PBS only, pH7.3

For technical support and original validation data for this product please contact:

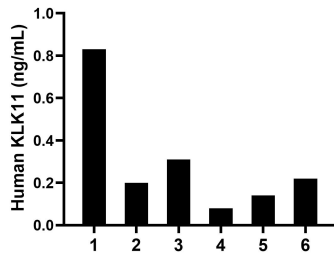
T: 4006900926

E: Proteintech-CN@ptglab.com

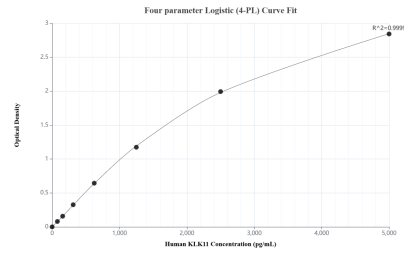
W: ptgcn.com

This product is exclusively available under Proteintech Group brand and is not available to purchase from any other manufacturer.

Selected Validation Data



Plasma of six individual healthy human donors was measured. The KLK11 concentration of detected samples was determined to be 0.30 ng/mL with a range of 0.14-0.83 ng/mL.



Sandwich ELISA standard curve of MP02641-1, Human KLK11 Recombinant Matched Antibody Pair - PBS only. 86517-3-PBS was coated to a plate as the capture antibody and incubated with serial dilutions of standard Eg2890. 86517-2-PBS was HRP conjugated as the detection antibody. Range: 78.1-5000 pg/mL.