

For Research Use Only

# KLK11 Recombinant monoclonal antibody, PBS Only

Catalog Number: 86517-1-PBS



## Basic Information

<b>Catalog Number:</b> 86517-1-PBS	<b>GenBank Accession Number:</b> NM_144947.2	<b>Purification Method:</b> Protein A purification
<b>Source:</b> Rabbit	<b>GeneID (NCBI):</b> 11012	<b>CloneNo.:</b> 251323F6
<b>Isotype:</b> IgG	<b>UNIPROT ID:</b> Q9UBX7-2	
<b>Immunogen Catalog Number:</b> EG2890	<b>Full Name:</b> kallikrein-related peptidase 11	
	<b>Calculated MW:</b> 31 kDa	
	<b>Observed MW:</b> 30-40 kDa	

## Applications

**Tested Applications:**  
WB, Indirect ELISA

**Species Specificity:**  
human

## Background Information

KLK11(Kallikrein-11) is also named as PRSS20, TLSP and belongs to the peptidase S1 family and Kallikrein subfamily. It is a multifunctional protease cleaving several substrates for kallikrein and trypsin and involved in normal physiology processes in bronchus. This full length protein has a signal peptide, a propeptide and four glycosylation sites. It has 4 isoforms produced by alternative splicing with the molecular weight of 31 kDa, 27 kDa, 34 kDa and 30 kDa.

## Storage

**Storage:**  
Store at -80°C.  
**The product is shipped with ice packs. Upon receipt, store it immediately at -80°C**

**Storage Buffer:**  
PBS only, pH7.3

For technical support and original validation data for this product please contact:

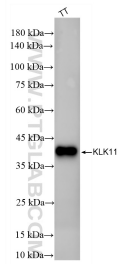
T: 4006900926

E: [Proteintech-CN@ptglab.com](mailto:Proteintech-CN@ptglab.com)

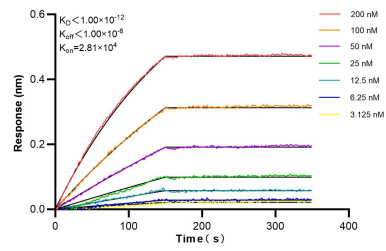
W: [ptgcn.com](http://ptgcn.com)

**This product is exclusively available under Proteintech Group brand and is not available to purchase from any other manufacturer.**

## Selected Validation Data



TT cells were subjected to SDS PAGE followed by western blot with 86517-1-RR (KLK11 antibody) at dilution of 1:10000 incubated at room temperature for 1.5 hours. This data was developed using the same antibody clone with 86517-1-PBS in a different storage buffer formulation.



Biolayer interferometry (BLI) kinetic assays of 86517-1-RR against Human KLK11 were performed. The affinity constant is below 1 pM.