

For Research Use Only

CWF19L2 Recombinant monoclonal antibody, PBS Only (Detector)

Catalog Number: 86514-1-PBS



Basic Information

Catalog Number: 86514-1-PBS	GenBank Accession Number: BC110442	Purification Method: Protein A purification
Source: Rabbit	GeneID (NCBI): 143884	CloneNo.: 251365C10
Isotype: IgG	UNIPROT ID: Q2TBEO	
Immunogen Catalog Number: AG21738	Full Name: CWF19-like 2, cell cycle control (S. pombe)	
	Calculated MW: 894 aa, 104 kDa	

Applications

Tested Applications:
Cytometric bead array, Indirect ELISA

Species Specificity:
human

Background Information

Storage

Storage:
Store at -80°C.
The product is shipped with ice packs. Upon receipt, store it immediately at -80°C

Storage Buffer:
PBS only, pH7.3

For technical support and original validation data for this product please contact:

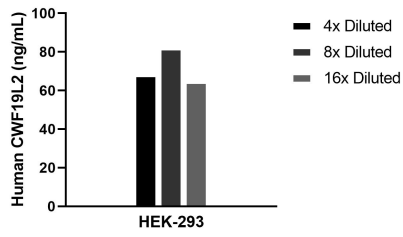
T: 4006900926

E: Proteintech-CN@ptglab.com

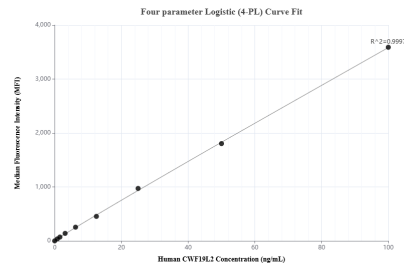
W: ptgcn.com

This product is exclusively available under Proteintech Group brand and is not available to purchase from any other manufacturer.

Selected Validation Data



The mean CWF 19L2 concentration was determined to be 71.4 ng/mL in HEK-293 cell extract based on a 1.1 mg/mL extract load.



Cytometric bead array standard curve of MPO2484-1, CWF19L2 Recombinant Matched Antibody Pair, PBS Only. Capture antibody: 86514-2-PBS. Detection antibody: 86514-1-PBS. Standard: Ag21738. Range: 0.781-100 ng/mL