

For Research Use Only

CPSF2 Recombinant monoclonal antibody, PBS Only (Capture)

Catalog Number: 86513-2-PBS



Basic Information

Catalog Number: 86513-2-PBS	GenBank Accession Number: BC070095	Purification Method: Protein A purification
Source: Rabbit	GeneID (NCBI): 53981	CloneNo.: 251387E7
Isotype: IgG	UNIPROT ID: Q9P2I0	
Immunogen Catalog Number: AG11950	Full Name: cleavage and polyadenylation specific factor 2, 100kDa	
	Calculated MW: 782 aa, 88 kDa	

Applications

Tested Applications:
Cytometric bead array, Indirect ELISA

Species Specificity:
human

Background Information

Storage

Storage:
Store at -80°C.
The product is shipped with ice packs. Upon receipt, store it immediately at -80°C

Storage Buffer:
PBS only, pH7.3

For technical support and original validation data for this product please contact:

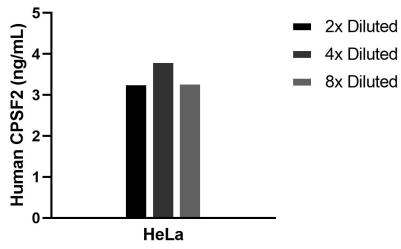
T: 4006900926

E: Proteintech-CN@ptglab.com

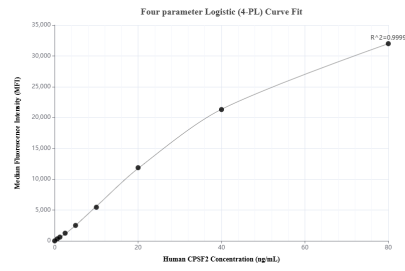
W: ptgcn.com

This product is exclusively available under Proteintech Group brand and is not available to purchase from any other manufacturer.

Selected Validation Data



The mean CPSF2 concentration was determined to be 3.5 ng/mL in HeLa cell extract based on a 1.2 mg/mL extract load.



Cytometric bead array standard curve of MP02482-1, CPSF2 Recombinant Matched Antibody Pair, PBS Only. Capture antibody: 86513-2-PBS. Detection antibody: 86513-1-PBS. Standard: Ag11950. Range: 0.625-80 ng/mL.