

For Research Use Only

# CPSF2 Recombinant monoclonal antibody, PBS Only (Detector)

Catalog Number: 86513-1-PBS



## Basic Information

Catalog Number:

86513-1-PBS

Source:

Rabbit

Isotype:

IgG

Immunogen Catalog Number:

AG11950

GenBank Accession Number:

BC070095

GeneID (NCBI):

53981

UNIPROT ID:

Q9P2I0

Full Name:

cleavage and polyadenylation specific factor 2, 100kDa

Calculated MW:

782 aa, 88 kDa

Purification Method:

Protein A purification

CloneNo.:

251387A8

## Applications

Tested Applications:

Cytometric bead array, Indirect ELISA

Species Specificity:

human

## Background Information

### Storage

Storage:

Store at -80°C.

**The product is shipped with ice packs. Upon receipt, store it immediately at -80°C**

Storage Buffer:

PBS only, pH7.3

For technical support and original validation data for this product please contact:

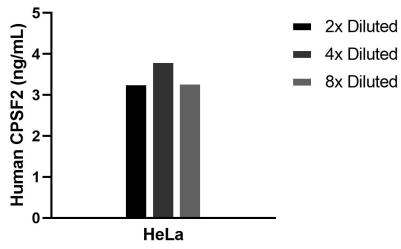
T: 4006900926

E: [Proteintech-CN@ptglab.com](mailto:Proteintech-CN@ptglab.com)

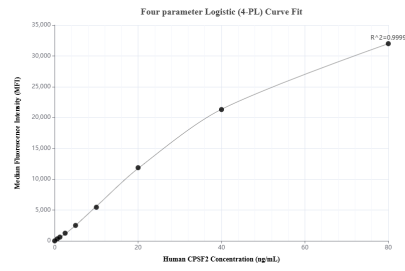
W: [ptgcn.com](http://ptgcn.com)

**This product is exclusively available under Proteintech Group brand and is not available to purchase from any other manufacturer.**

## Selected Validation Data



The mean CPSF2 concentration was determined to be 3.5 ng/mL in HeLa cell extract based on a 1.2 mg/mL extract load.



Cytometric bead array standard curve of MP02482-1, CPSF2 Recombinant Matched Antibody Pair, PBS Only. Capture antibody: 86513-2-PBS. Detection antibody: 86513-1-PBS. Standard: Ag11950. Range: 0.625-80 ng/mL.