

For Research Use Only

LRRC8D Recombinant antibody

Catalog Number: 86510-1-RR



Basic Information

Catalog Number:

86510-1-RR

Concentration:

1000 µg/ml

Source:

Rabbit

Isotype:

IgG

Immunogen Catalog Number:

AG2138

GenBank Accession Number:

BC024159

GeneID (NCBI):

55144

UNIPROT ID:

Q7L1W4

Full Name:

leucine rich repeat containing 8 family, member D

Calculated MW:

858 aa, 98 kDa

Observed MW:

98-120 kDa

Purification Method:

Protein A purification

CloneNo.:

251257E6

Recommended Dilutions:

WB: 1:5000-1:50000

IF/ICC: 1:200-1:800

Applications

Tested Applications:

WB, IF/ICC, ELISA

Species Specificity:

human, rat

Positive Controls:

WB : HEK-293 cells, HaCaT cells, rat brain tissue

IF/ICC : HEK-293 cells,

Background Information

LRRC8D (or LRRC5L) gene encodes a 98-kDa multi-pass membrane protein leucine-rich repeat-containing protein 8D, which contains 13 LRRs (leucine-rich repeats). The molecular function of this protein is so far not well understood. Recently, LRRC8D gene was found to be up-regulated after IL-2 deprivation in immortalised Interleukin-2(IL-2)-dependent human T cells, indicating a possible involvement of LRRC8D in cancer development. This LRRC8D antibody can't cross-recognize LRRC8A.

Storage

Storage:

Store at -20°C. Stable for one year after shipment.

Storage Buffer:

PBS with 0.02% sodium azide and 50% glycerol, pH7.3

Aliquoting is unnecessary for -20°C storage

For technical support and original validation data for this product please contact:

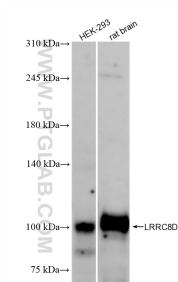
T: 4006900926

E: Proteintech-CN@ptglab.com

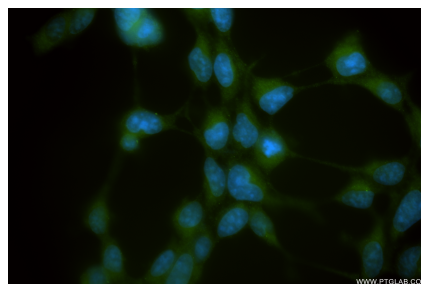
W: ptgcn.com

This product is exclusively available under Proteintech Group brand and is not available to purchase from any other manufacturer.

Selected Validation Data



Various lysates were subjected to SDS PAGE followed by western blot with 86510-1-RR (LRRRC8D antibody) at dilution of 1:10000 incubated at room temperature for 1.5 hours.



Immunofluorescent analysis of (-20°C Ethanol) fixed HEK-293 cells using LRRRC8D antibody (86510-1-RR, Clone: 251257E6) at dilution of 1:400 and CoraLite® 488-Conjugated Goat Anti-Rabbit IgG(H+L) (SA00013-2).