

For Research Use Only

Mouse CCL7/MCP-3 Recombinant monoclonal antibody, PBS Only (Capture)

Catalog Number: 86501-1-PBS



Basic Information

Catalog Number: 86501-1-PBS	GenBank Accession Number: NM_013654.3	Purification Method: Protein A purification
Concentration: 1 mg/ml	GeneID (NCBI): 20306	CloneNo.: 250662A1
Source: Rabbit	UNIPROT ID: Q03366	
Isotype: IgG	Full Name: chemokine (C-C motif) ligand 7	
Immunogen Catalog Number: EG4626	Calculated MW: 11kDa	

Applications

Tested Applications:
Sandwich ELISA, Indirect ELISA

Species Specificity:
mouse

Background Information

Storage

Storage:
Store at -80°C.
The product is shipped with ice packs. Upon receipt, store it immediately at -80°C

Storage Buffer:
PBS only, pH7.3

For technical support and original validation data for this product please contact:

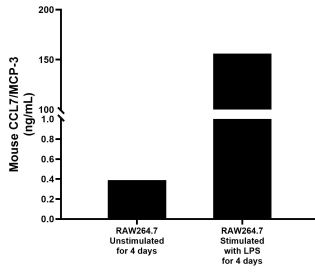
T: 4006900926

E: Proteintech-CN@ptglab.com

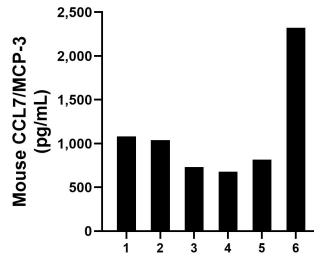
W: ptgcn.com

This product is exclusively available under Proteintech Group brand and is not available to purchase from any other manufacturer.

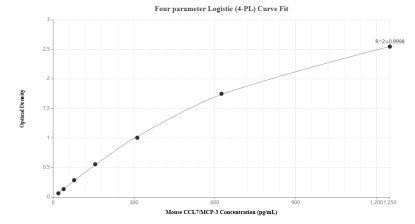
Selected Validation Data



RAW264.7 cells were cultured unstimulated or stimulated with 1 μ g/mL LPS for 4 days. The mean CCL7/MCP-3 concentration was determined to be 0.39 ng/mL in unstimulated supernatant, 155.99 ng/mL in LPS stimulated supernatant.



Serum of six mice was measured. The mouse CCL7/MCP-3 concentration of detected samples was determined to be 1,111.5 pg/mL with a range of 678.1-2,323.1 pg/mL.



Sandwich ELISA standard curve of MP02647-1, Mouse CCL7/MCP-3 Recombinant Matched Antibody Pair - PBS only. 86501-1-PBS was coated to a plate as the capture antibody and incubated with serial dilutions of standard Eg4626. 86501-2-PBS was HRP conjugated as the detection antibody. Range: 19.5-1250 pg/mL